

## Trains and Troops Strasburg, PA

On 5-6 November 2022, the Army Ground Forces Association (AGFA) supported the Pennsylvania Railroad Museum during the annual "Trains and Troops" event. This unique event chronicles the use of railroads throughout American military history from the Civil War to the present day.

The members of AGFA who participated in the event were Donna Cusano, Paul Cusano, Daniel Fortak, Doug and Lynda Houck, Anne Lutkenhouse, John Uhler, Gary and Deanna Weaver, Shawn Welch and our guests Rochelle Collantes and Becky Webb.

The educational objective was to provide interpretation of the oft-forgotten and overlooked missions of the U.S. Army's Coast Artillery railway guns; railroad-based medical operations, general railroad support during the World War Two and World War One periods and the critical morale support provided by the Chaplains of the military in all wars throughout American history.

The Pennsylvania RR Museum features a very extensive collection of excellently preserved locomotives and rolling stock within its main building. Interpreters for the Trains and Troops event set up exhibits directly in the museum proper, with the rail cars and engines as a historic back drop. The photo below shows many of our participating membership and friends on Saturday, 5 November.



The event started on Saturday morning at 1000 hours and at 1100 the local Color Guard posted the Flag. This was a wonderful start to the day!



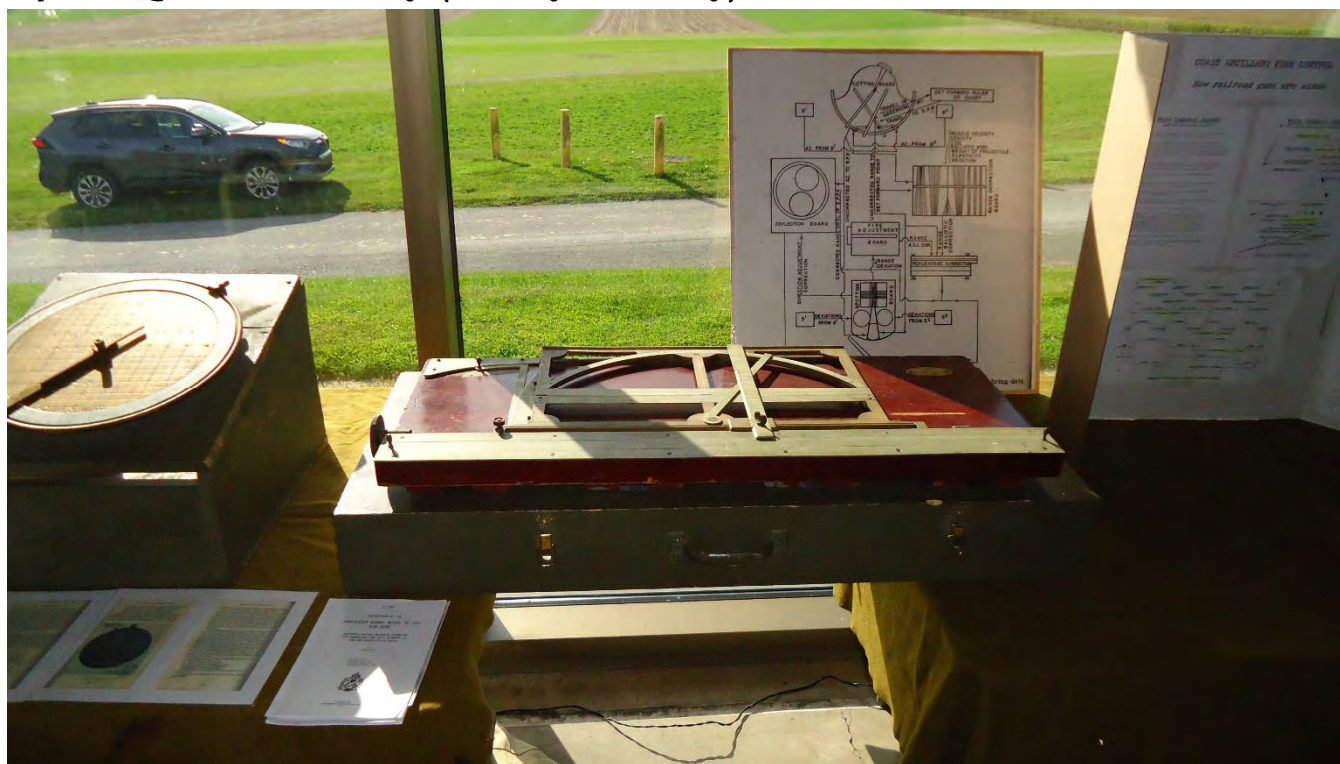
The Railway Artillery interpretation had several key components of Artillery Fire Control and photographs of railway artillery. Below is an M1910A1 Azimuth Instrument with its azimuth indicator lights lit. Two EE-91 fire control telephones are also shown on either side of the instrument. The view out the back window of the museum was spectacular.



Below is a field desk with many manuals on Railway Artillery. The brass disc is a "Wind Component Indicator" which provides fire control data on the effect of wind for Range and Direction.



Next to the Wind Component Indicator is an M1905 Deflection Board and charts explaining Coast Artillery (Railway Artillery) fire control.



Below is an EE-8 field telephone and two weapons critical to the Coast Artillery - The M1903 Springfield Rifle and the M1918 Browning Automatic Rifle.



The charts below explained the history of the 52<sup>nd</sup> Coast Artillery Regiment (Railway) and several types of Railway guns - the M1918 8-inch Gun, M1918 12-inch Mortar and M1 8-inch gun.



Below TSG Weaver is shown in Army Blue Denim uniform with a railroad workers jacket and hat. This was common for the train crewmen of the Railway Artillery.



The medical displays began with a "hospital train bed" and various pieces of medical equipment and patient clothing.



The table below exhibited many different types of WWII period medical equipment that would have been used on medical trains during WWII.



Additional Medical Corps equipment to include dining place setting are shown below.



Several magazines of the period along with bandages and treatment materials are shown below.



One of the most interesting aspects of the display was the use of “drugs” by the military. In this case a small display of German Pervitin which is a German Benzedrine (amphetamine) drug. The display outlines the severe drug addiction problem that was caused by “policy” of the German Army in WWII.



The photos below show various hospital trains in operation during WWII. The Pullman Company provided the train cars and managed their distribution on behalf of the Army and Navy Medical Departments.



The display below outlines the contributions of Chaplains to the American soldier and sailor in America's conflicts.





Below is a "Field Organ" that would be used in field church services. This organ works and we had a great time playing various hymns and songs during the weekend.



Additional liturgical materials and photographs are shown below. The Chaplain's field desk is shown with all materials as specified by each denomination.



An AGFA guest from the 45<sup>th</sup> Infantry Division (reenacted) Venture Crew, Paul Jacobowski, explains his display of soldier equipment and individual weapons.



AGFA member Dan Fortak and Rochelle Collantes stand next to one section of their display on WWII military railroad operations in Pennsylvania.



Another section of Dan and Rochelle's display covered security measures for railroads during WWII.



Another section of Dan and Rochelle's display covered security measures for railroads in WWI, and Troop and Material Movements.



Another section of Dan and Rochelle's display addressing changes for WWII and travel by President Franklin Roosevelt by train during WWII.



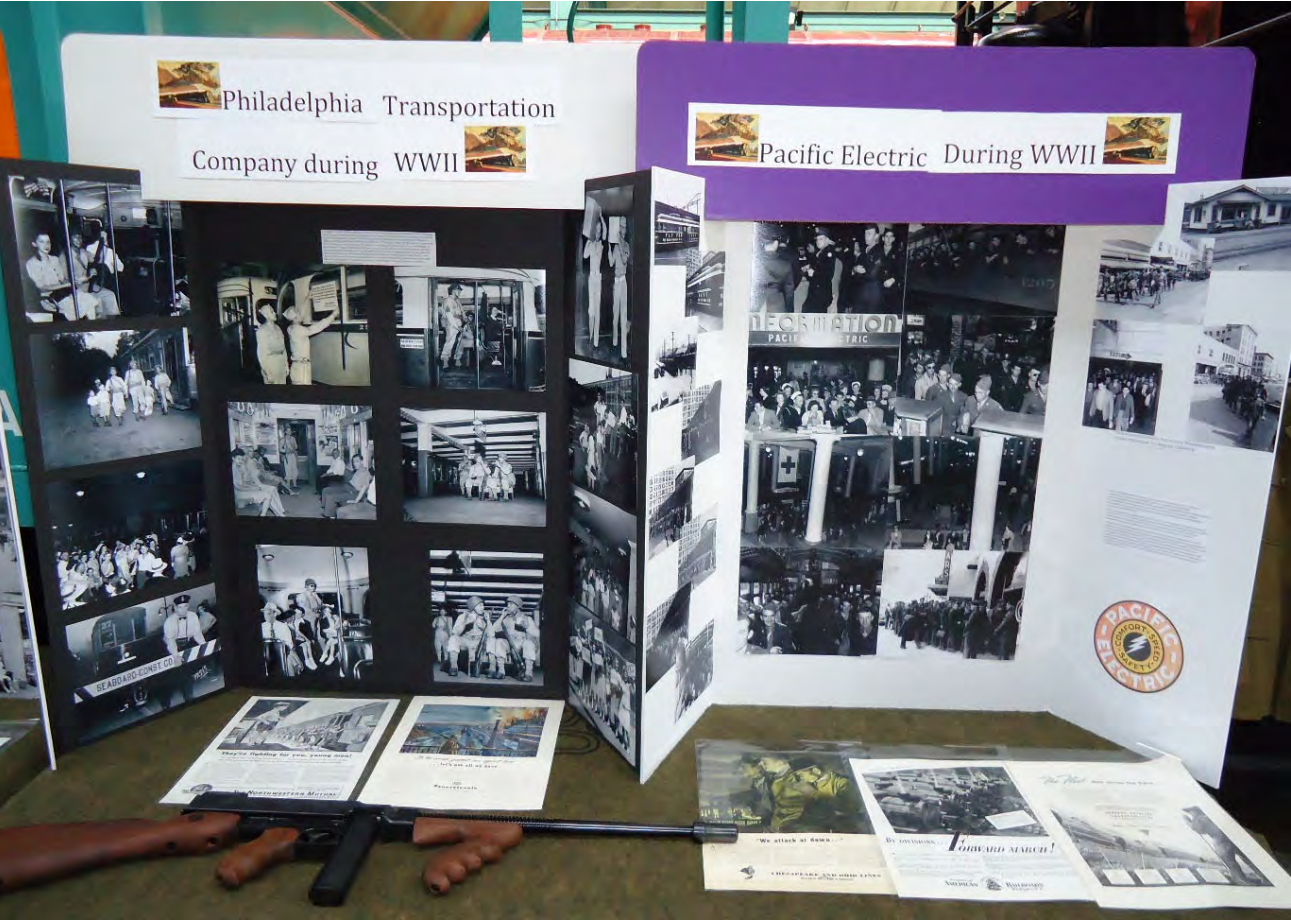
Another section of Dan and Rochelle's display covering general WWII railroad operations and stations.



Below are photographs of various major railroad stations during WWII in Pennsylvania and New York City.



Below are photographs of various major railroad stations during WWII in Philadelphia.



There were many other excellent displays of WWII equipment such as this M1917A1 .30 caliber machinegun on an Anti-Aircraft tripod.



Another view of the machinegun and the other displays of the owner.



Fort Mott State Park (NJ) had a display of Coast Artillery Fire Control telephones dating from the 1900-1920 time period. From left to right is a EE-3B field telephone, a EE-31 Telephone, commercial switch box, EE-27 Telephone and a EE-25 Battery Commander's telephone in a steel box.



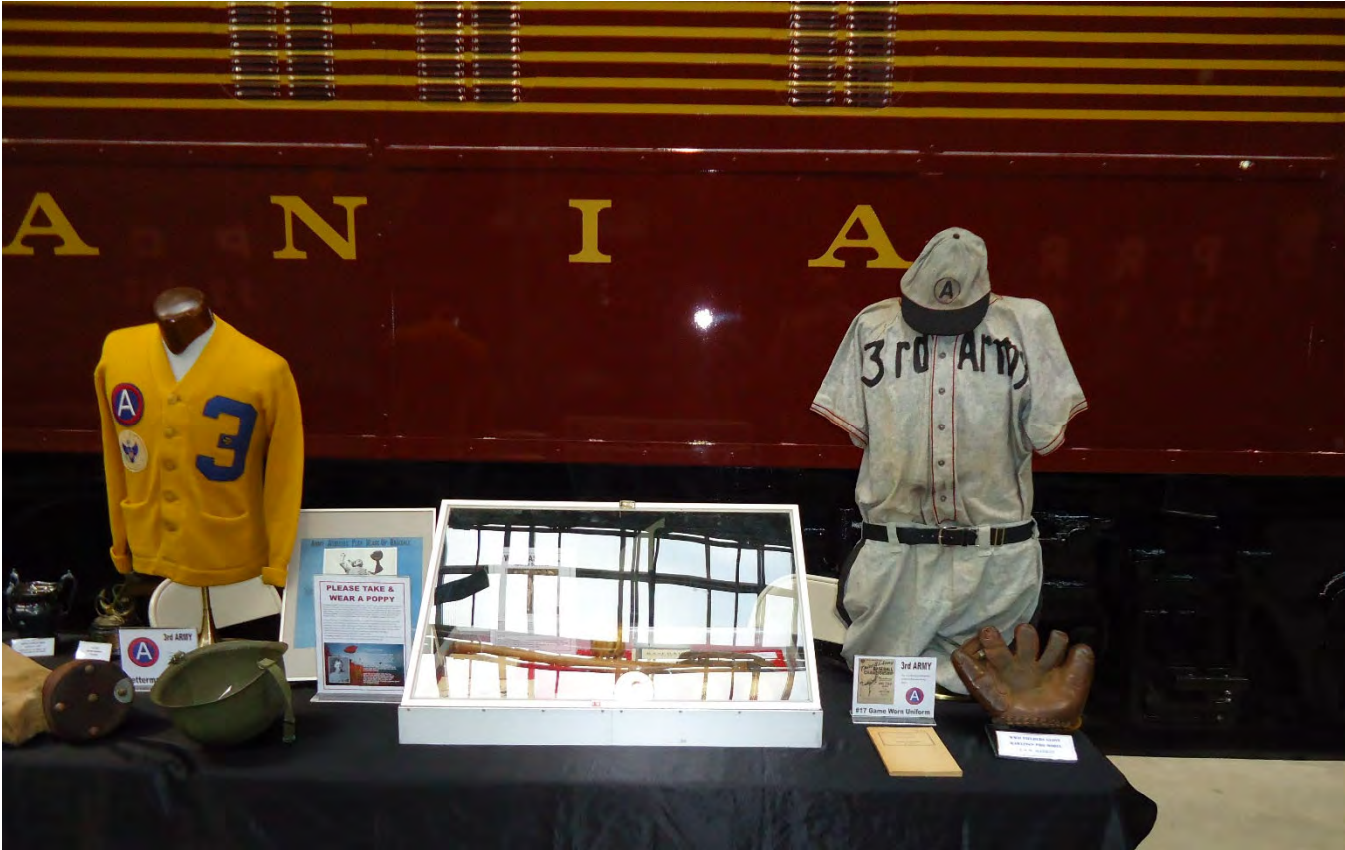
Another excellent exhibit from Fort Mott is the "Hello Girls" of WWI who operated the US Army's major telephone exchanges during WWI in France.



One of the most interesting displays was of Army and Navy recreational sports activities and some of the vintage equipment used during WWII (e.g. golf, tennis).



Below are historic uniforms from various Army sports teams in WWII.





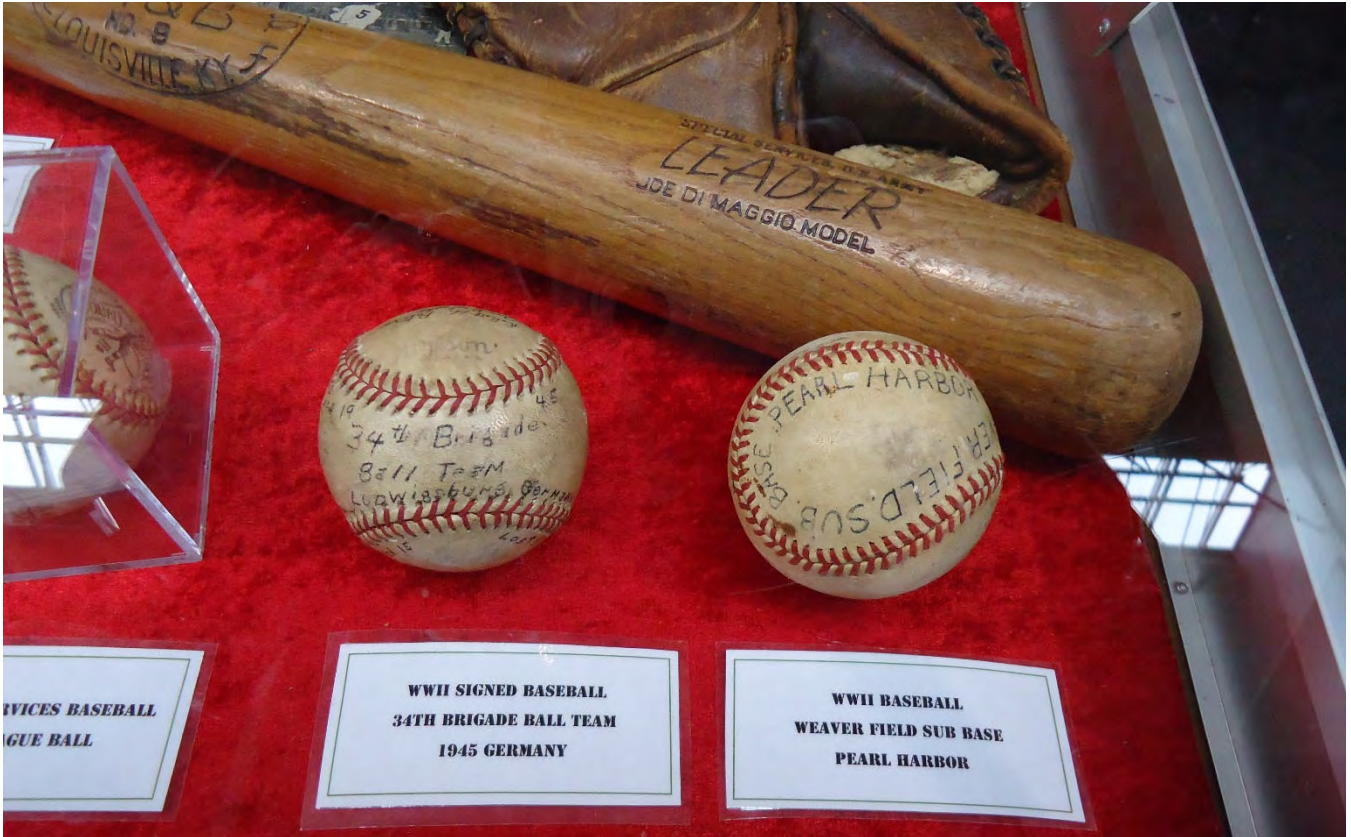
The photo below shows a set of WWII Army Special Services Division golf clubs.



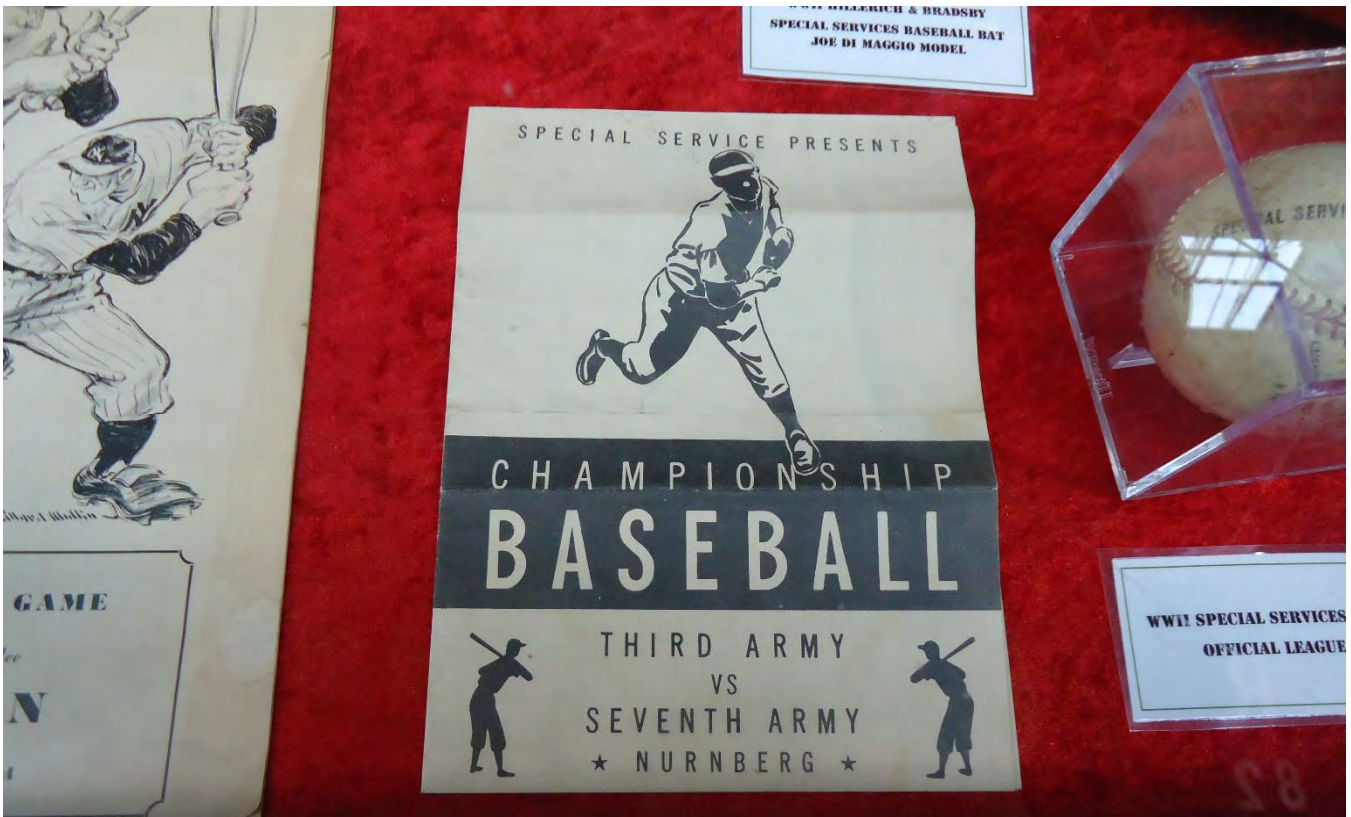
Below are the golf clubs themselves appropriately marked "US Army Special Services".



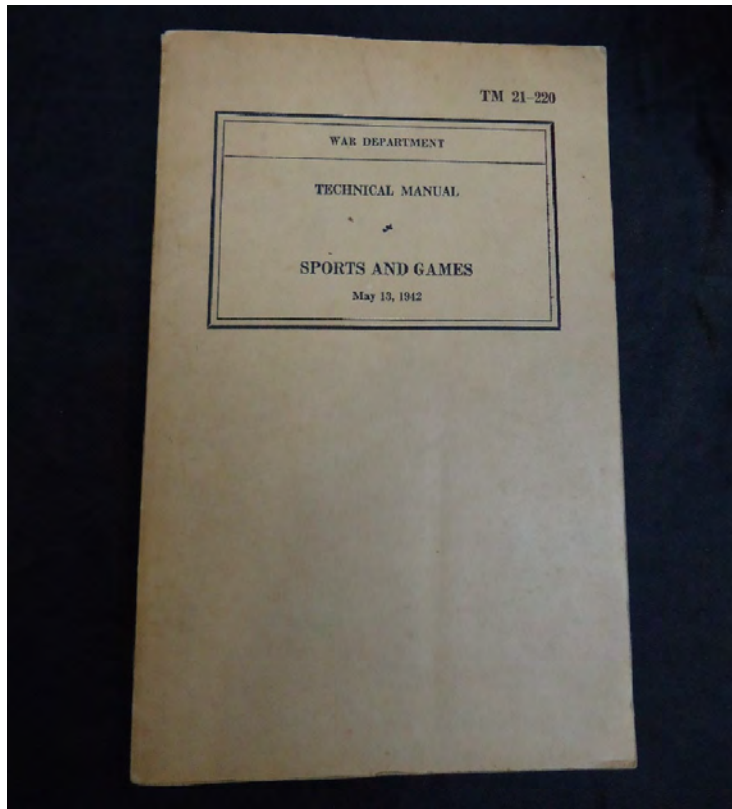
Baseball of course was a major activity during WWII. Below is a baseball bat marked "Special Services" and two baseballs.



Below is additional baseball memorabilia.



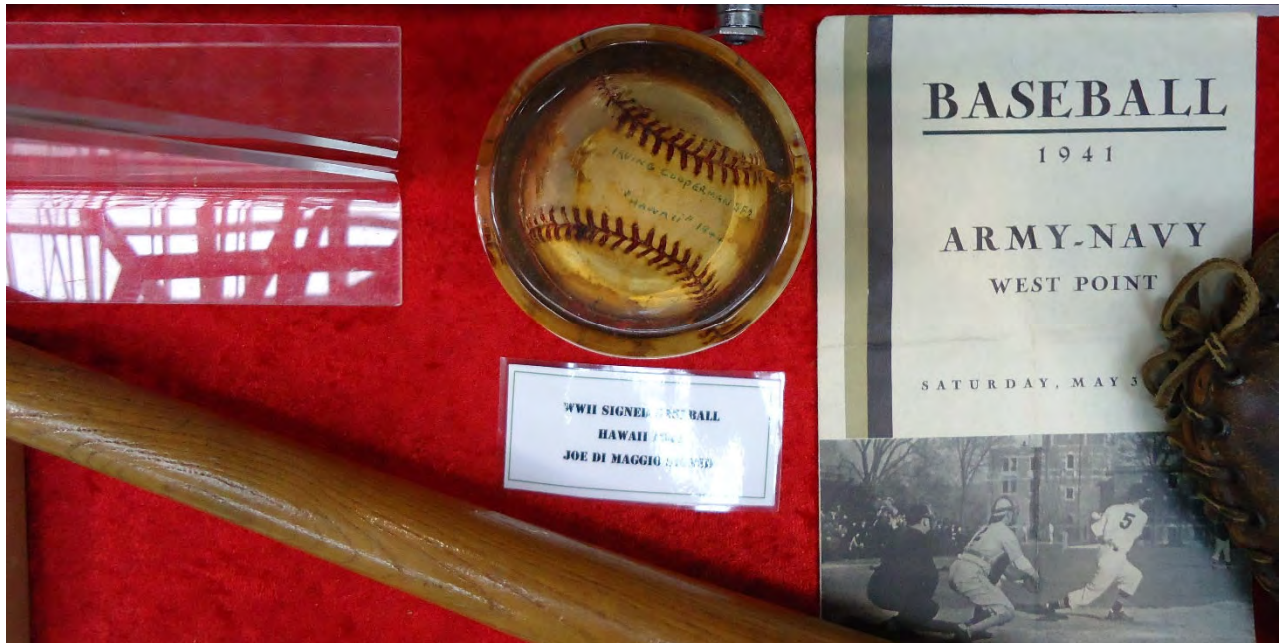
The Army has a manual for everything - including sports - covering equipment and the "rules of the game"!



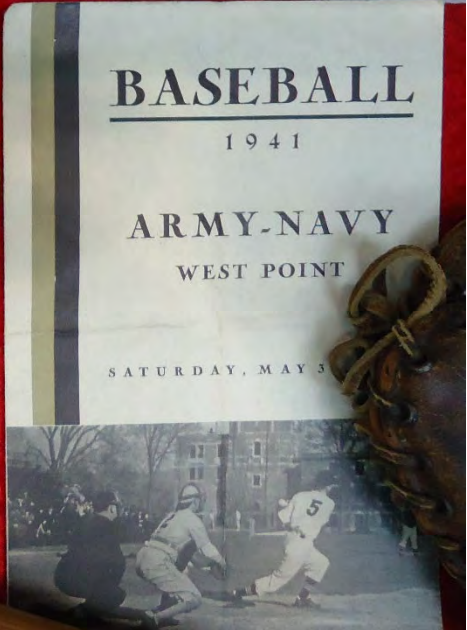
Tennis was popular as well and below is a Special Services-marked tennis racket and frame.



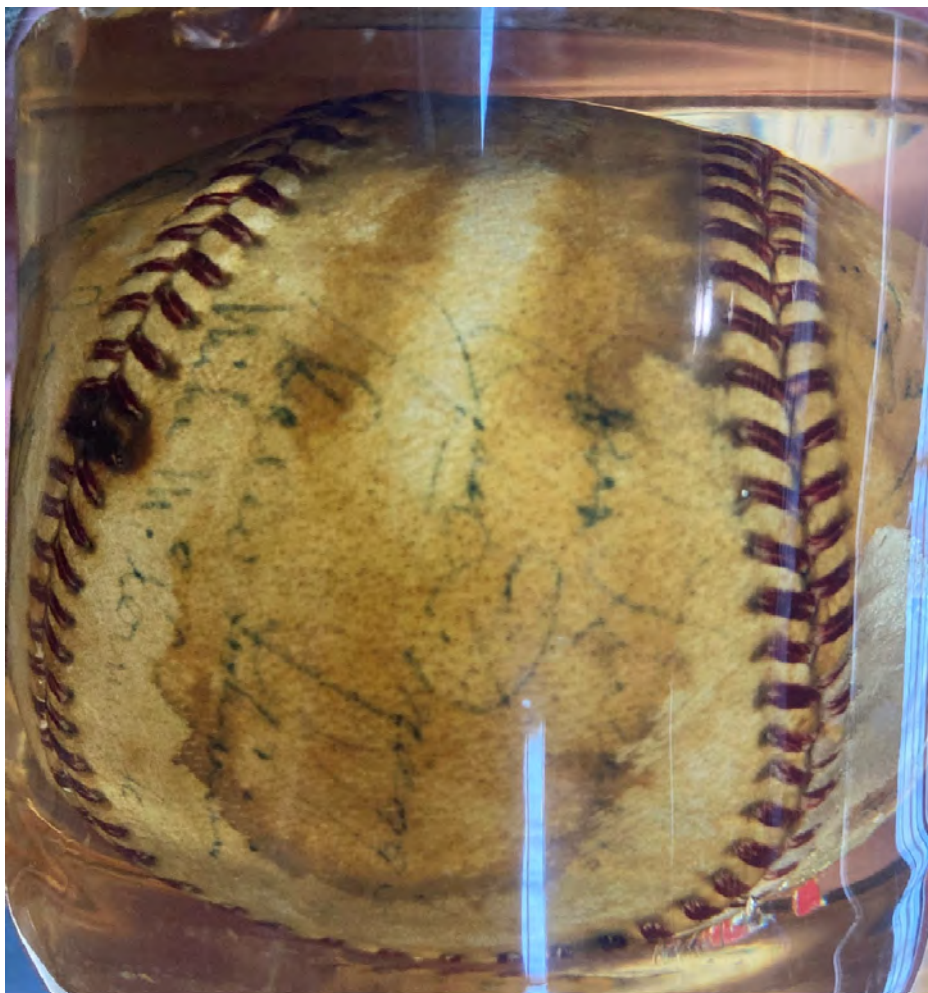
The baseball display below includes a west point program and a Hawaii ball.



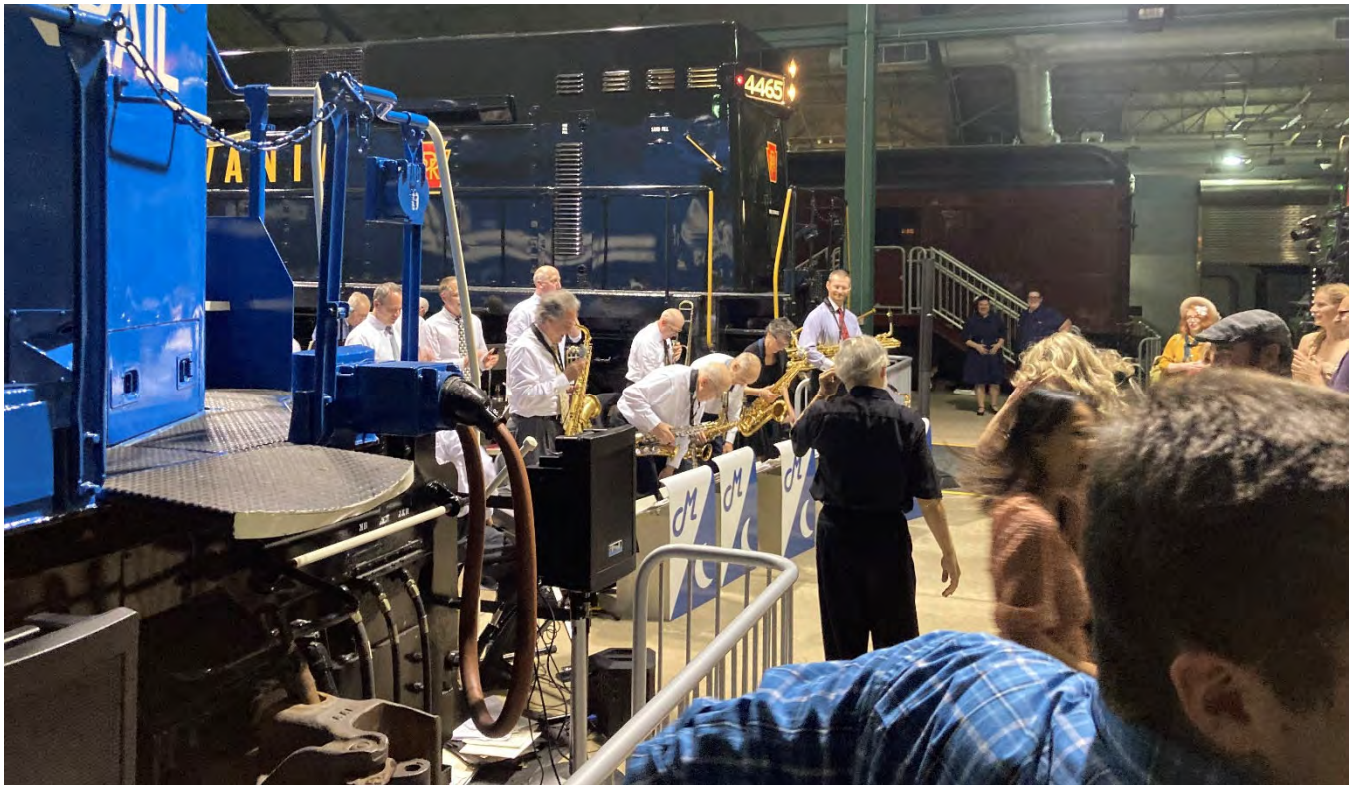
WWII SIGNED BASEBALL  
HAWAII 1941  
JOE DI MAGGIO SIGNED



And below is that ball showing Joe Di Maggio's signature!



Saturday evening is a wonderful swing dance held inside the museum.



Below the large number of dancers for the event is very apparent.



Below 1LT Lutkenhouse, 2LT Cusano and CPT(Dr) Cusano are awaiting the next selection.



During the evening we visited several train cars of serious interest.



The Pullman Company had a series of cars that were designed for "exclusive" travel. The "Lotos Club Car" was one of the more opulent cars.



Below is the Lotos Club Car dining room.



Below is the Lotos Club Car sleeping accommodations.



Below is the Lotos Club Car seating accommodations.





More seating in the Lotos Club Car.



The exterior of the Lotos Club Car.



Below is a view of the Coast Artillery Railway Artillery display.



Visitors are looking at the chaplaincy equipment as CPT(CH) Uhler and MAJ(CH) Landis chat.



Boy Scouts really enjoyed all the equipment. Below they take turns looking through the M1910A1 Azimuth Instrument.



And the photo shows what they see.



And another view shows a farm with house and barn.



The EE-91 telephones were also of interest to the Boy Scouts. They took turns talking to each other on the various telephones.



After leaving Railway Artillery, the Scouts spoke with 2LT Cusano to learn about various aspects of military medial trains.



Below CPL Cusano stands next to the weapons display table.



Public visitation varied throughout the day. Below MAJ(CH) Landis reads one of the WWII chaplains books awaiting the next group of visitors.



Below CPT(CH) Uhler stands in the center of the Railway Artillery display.



Below 2LT Cusano speaks with a veteran as 1LT Lutkenhouse explains military medicine to two young visitors.



Another view of the medical displays.



At the end of the day on Sunday, 2LT Cusano, 1LT Lutkenhouse and 1LT Webb prepare to “depart” on a train!



We look forward to returning to Strasburg for Troops and Trains in 2023 and we hope to see you there! For more information, visit AGFA Website <http://armygroundforces.org> and the Troops and Trains website at: <http://www.rrmuseumpa.org/>