

REPORT OF COMPLETED WORKS - SEACOAST FORTIFICATIONS.
(Gun and Mortar Batteries)

COAST DEFENSES OF Sandy Hook

FORT Hancock, N. J.

* BATTERY Richardson

Form 1

Corrected to

July 1, 1921

No. of guns 2

Caliber 12"

Carriage Dis

Battery commenced	1902	Sources of electric current	C.P.P., Bloomfield #1; 25 K.W. set and Alexander 25 K.W. sets
Battery Completed	1904	Max. kw. required for lights	5-1/4 KW.; KW. based on 50 watt lamps
Date of transfer	Apr. 23, 1904	Max. kw. required for motors	30-1/2 K.W.
Material of construction	Concrete	Present condition battery	Good
Portland or Rosendale cement	Portland	Rooms wet or dry	Dry
Cost to date of transfer	\$100,000.00	How ventilated	Through doorways, passages and air spaces.
Connected to water supply	Yes	Remarks:-	Battery "modernized" platforms widened.
Connected to sewer	-		
Type of latrine	-		
Type of data transmission	Telephone		
Trunnion elevation in battery	(Emp. #1; 35.643 " #2; 35.685 M.L.W.)		
Datum plane			

ARMAMENT

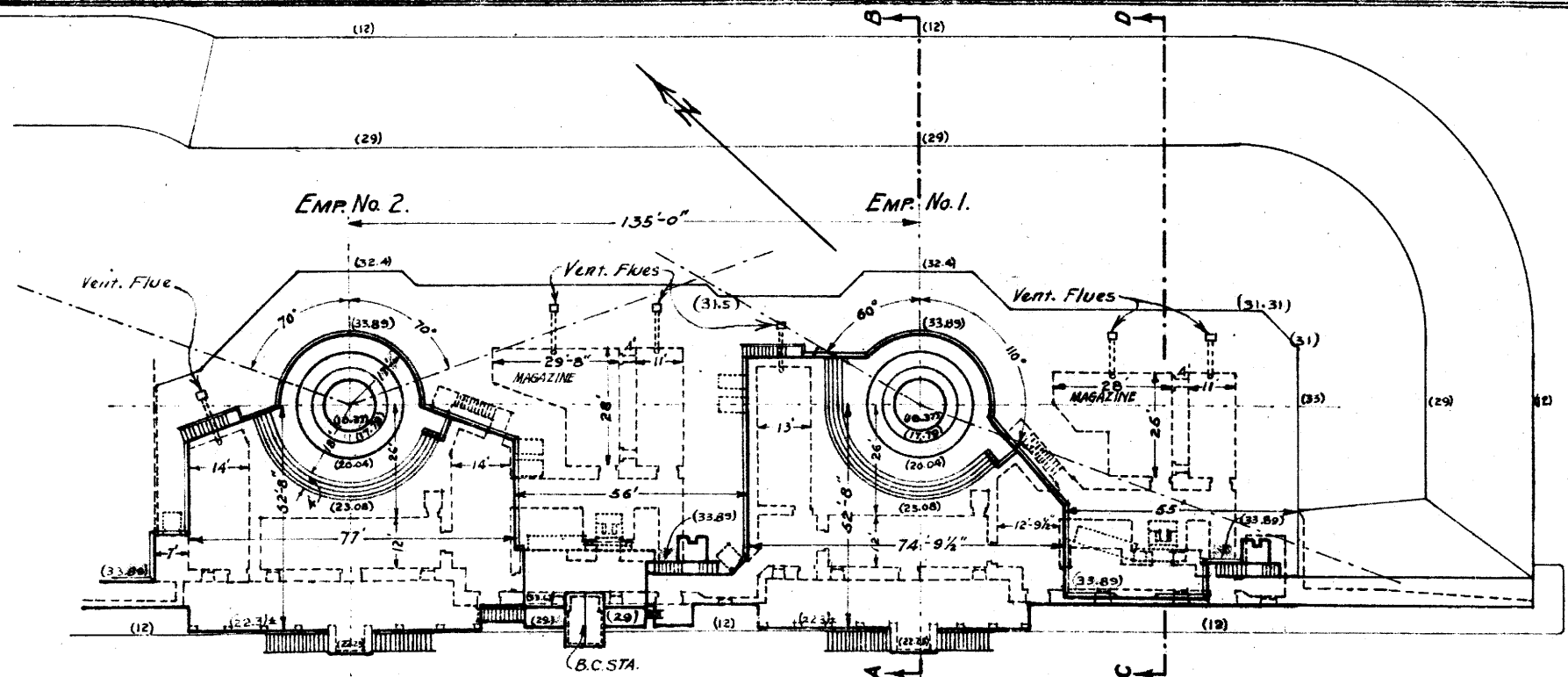
Emplacement or mortar No.	Guns or Mortars						Carriages				
	Cal.	Length	Model	Serial No.	Manufacturer	Mounted	Type	Model	Serial No.	Manufacturer	Motor
1	12"		1895MI	Water 71	Watervliet Arsenal	Yes	Dis	1901	#4	Midvale Steel Co.	Yes
2	12		"	64	do.	"	"	1901	#3	do.	Yes
3											
4											
5											
6											
7											
8											

HOISTS

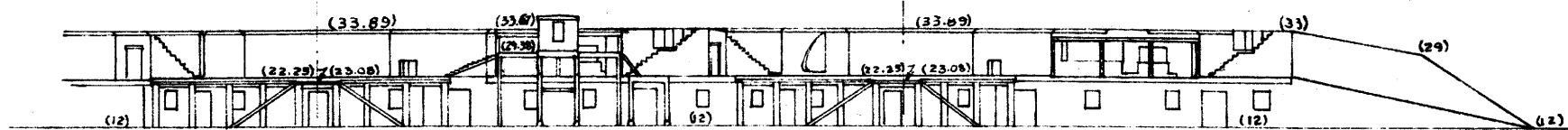
Emplacement Number	Type	Delivery	Motor						Date of transfer	Remodeled for long points
			Serial No.	Maker	H.P.	Volts	RPM	Type of control		
1	T.R.	Back	654982	G.E.	7-1/2	110	800	Contactor controller	Apr. 3, 1918	Yes
2	"	"	642534	G.E.	7-1/2	110	800	" "	Sept. 20, 1917.	Yes
3										

* Salvage of armament & accessory equipment directed by ASF 11/27/93 - 400,93 (N.Y.) CM 79659

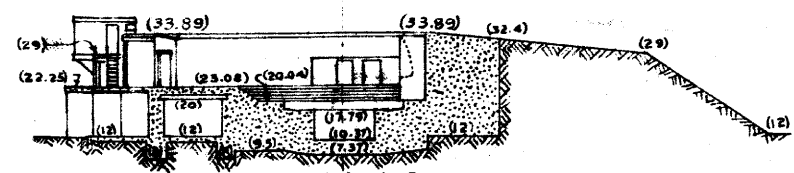
Corrected to July 1, 1921.



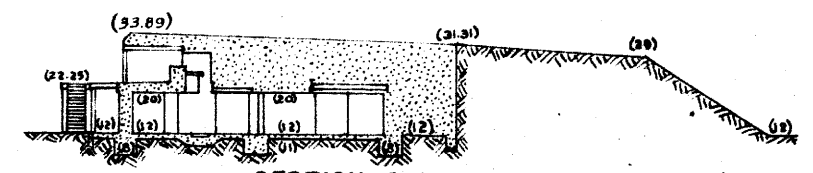
PLAN.



ELEVATION.



SECTION A-B



SECTION C-D

REPORT OF COMPLETED WORKS - SEACOAST FORTIFICATIONS

COAST DEFENSES OF SANDY HOOK
FORT HANCOCK

BATTERY RICHARDSON

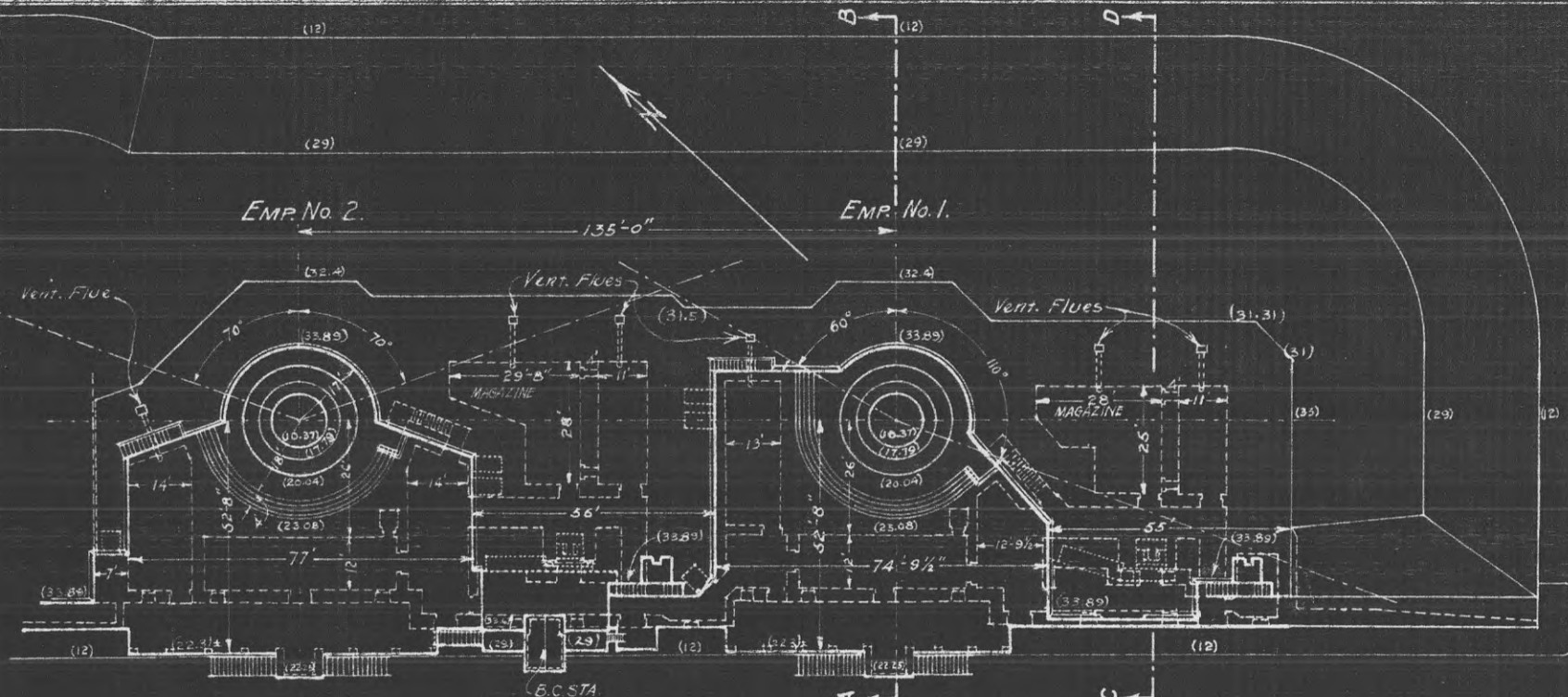
No. of Guns 2.

Caliber 12"

Carriage Dis.

Corrected to July 1, 1921.

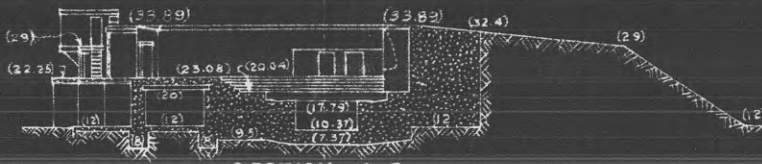
Scale: 1" = 40'



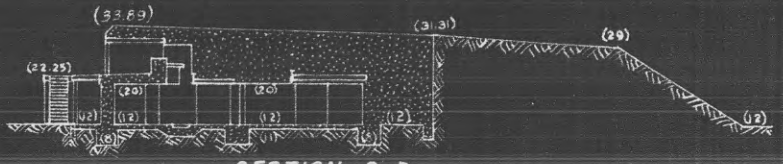
PLAN.



ELEVATION.



SECTION A-B



SECTION C-D

COAST DEFENCES OF Sandy Hook

FORT Hancock BATTERY Richardson NO OF GUNS: 2 CALIBER: 12"

	EMPLACEMENT NUMBER 1.	EMPLACEMENT NUMBER 2.	EMPLACEMENT NUMBER 3.	EMPLACEMENT NUMBER 4.				
1- a. Azimuth	176° - 30'	137° - 30'						
b. Distance	870'	135'						
2- a. Model of Gun	1895 MI #71	1895 MI #64						
b. Carriage	1901 #4	1901 #3						
c. Type of	Dis	Dis						
3- Elevations of	-	-						
a. Gun trunnions (in battery)	35.69	35.69						
b. Interior crest	33.89	33.89						
c. Loading platform	23.08	23.08						
4- Angle of depression	0°	0°						
5- Limiting azimuths of field of fire as determined by:	FROM	TO	FROM	TO	FROM	TO	FROM	TO
	0	0	0	0	0	0	0	0
	a. Construction of emplacement	167.37	339.39	154.20	302.33			
	b. Interference by adjacent emplacements	167.37	339.39	154.20	302.33			
	c. Interference of other obstacles external to emplacement	167.37	339.39	154.20	302.33			
d. Position of Ordnance stops	172.37	354.39	157.20	299.33				

NOTES.

1. Azimuth and distance of emplacement No. 2 are given with reference to No. 1, of No. 3, with reference to No. 2, etc. Azimuth and distance of No. 1, are given with reference to Bolt on Gun Lift Battery (Battery Potter)

3. Above plane of M. L. W.

5-c. Nature of obstacles: None

2-c. Use one of following abbreviations or designations: Dis.; Nondis.; Alt. gun-lift, Tower, Casemate, Ped., B.P.

REPORT OF COMPLETED WORKS - SEACOAST FORTIFICATIONS.
(Fire control and torpedo structures)

COAST DEFENSES OF Sandy Hook
FORT Hancock, N. J.

Form 2 Corrected to July 1, 1921

STRUCTURE B.C. Richardson

Location	: In rear of center traverse of Battery Richardson.	Type of data transmission	: --
Date of transfer	: June 27, 1921.	Date of transfer	: --
Cost to date	: \$3,533.37	Cost of data transmission	: --
Type of construction	: concrete	equipment.	:
(a) Roof	: "	For tide stations give description of tide gauge.	: --
(b) Remainder of building	: 3'-0" $\frac{1}{2}$ below parapet	For datum points give Forts from which visible	: --
How concealed	: do.	For dormitories give stations served	: --
How protected	: About 3 ft.	For cable hut give S.C. type	: --
Height above concealment	: do		:
Height above protection	: Yes		:
Conspicuous at 5000 $\frac{1}{2}$ yards	: Central power plant, Bloomfield & Alexander, 25 LWS.		:
Source of electric current	: .20 KW.		:
Kilowatts required	: wall lamp		:
Type of lighting fixtures	: --		:
How heated	: --		:
Connected to water mains	: Permanent		:
Connected to sewer	: Good		:
Type of latrine	: 12.0 ft. above m.l.w.		:
ermanent or temporary installation	: 35.21 $\frac{1}{2}$ above m.l.w.		:
Present condition	: None mounted		:
Reference of site	: --		:
Reference of instrumental axis	: --		:
Type of observing instrument	: --		:
Type of plotting board	: --		:
Type and capacity of crane	: --		:
Max. dimensions of reel handled	: --		:

