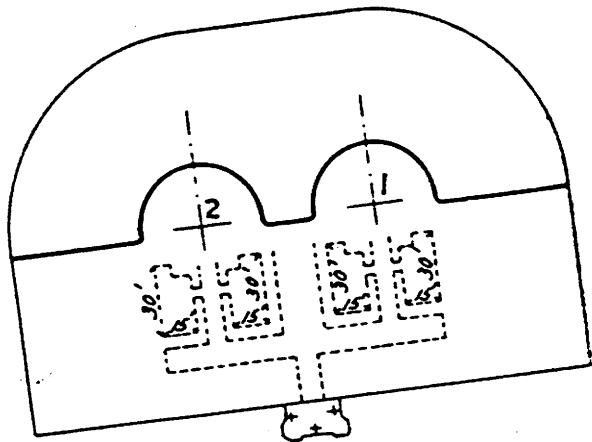


GUN LIFT BATTERY.

*Two 12" B.L. Rifles, model 1888, mounted; Gun Lift
-riages; concrete emplacements; serviceable.*



CAPONIERE OF GUN LIFT BATTERY.

*Three positions for musket calibre machine
guns in Casemates of 2nd Tier; vacant; serviceable.*


BATTERY COMMANDER'S STA.

REPORT OF COMPLETED WORKS - SEACOAST FORTIFICATIONS
(Fire Control or Submarine Mine Structure)

HARBOR DEFENSES OF NEW YORK
FORT HANCOCK, NEW JERSEY
STRUCTURE HARBOR ENTRANCE CONTROL POST

(Formerly F₁¹(McCook), B₁ Reynolds)

SPEKM-1

Part II *45672* Corrected to 20 MAY 1944

STRUCTURE: x Not Available
Location (by coordinates) y
Location (by site description) Top Old Battery Potter
Date of transfer 9 October 1905
Cost to that date \$3,000.00 Project 220 Funds
Type (for observing stat.-tower, dug-in,
cottage, etc.) 2 Floor - Wood Frame
Type of construction
(a) Roof Tin on Wood Frame
(b) Remainder of bldg. Wood Frame
How concealed Camouflage Paint
How protected None
Height above concealment None
Height above protection --
Conspicuous at 2,000 yards

UTILITIES:

Electric Power
Source of Commercial*
Characteristics: Voltage 115/230 Ac or DC...Phase 1ø
Kilowatts required 15.0 KVA
Type of lighting fixtures Drop Lights
Heat
How heated None
Water Sewer
Connected to water mains No
Connected to sewer No
Type latrine None

REFERENCE:

Fin. Floor El. 44.07

Reference of site Mean Low Water
Reference of instrument axis El. 56.73 M.L.W.
where (Type and Capacity of Crane --)
applicable (M.x. dia. of reel handled --)

INSTRUMENTS & EQUIPMENT

Type of observing inst. Navy Observing Inst.
Type of plotting board

DATA TRANSMISSION:

Type Telephone & Radio
Date of transfer --

TIDE STATION:

Give description of tide gauge

DATUM POINTS:

Give Forts from which visible

QUARTERS:

Give stations served

CABLE HUT:

Give S.C. Type

*D.C. Fortification Standby for lighting.

(Where applicable)

SECRET

(See Attached Sheets)

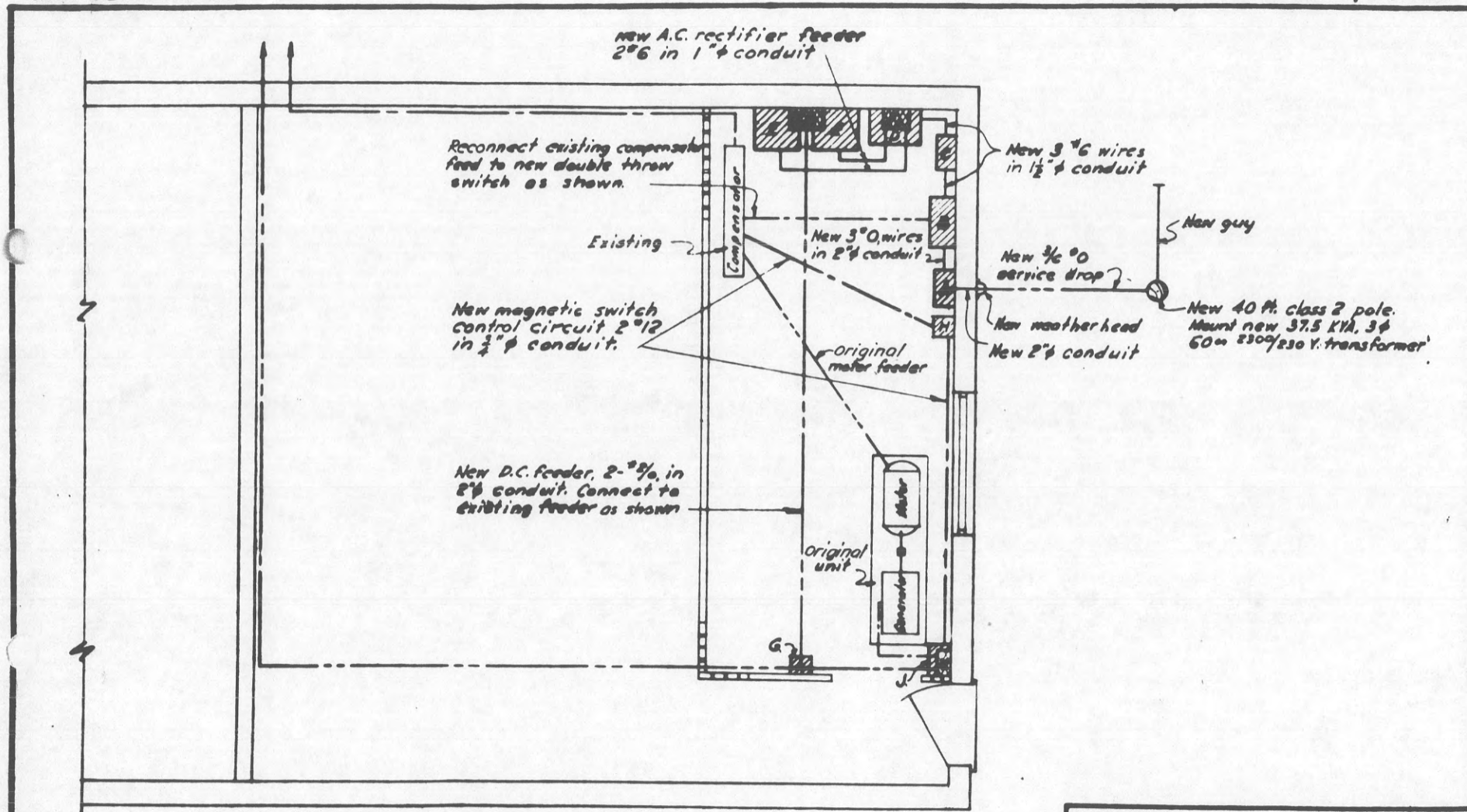
NATURE & COST OF ADDITIONAL REPAIRS & MODIFICATIONS

1944 - Installation of Rectifiers
Harbor Entrance Control Post

This project consists of the installation of 150 lin.
ft. of 3Ø primary distribution for Harbor Entrance Control Post.
1 - 37.5 KVA Transformer.
2 - 5 KW Rectifiers.
Switches and interior wiring.

.....\$ 2,949.45

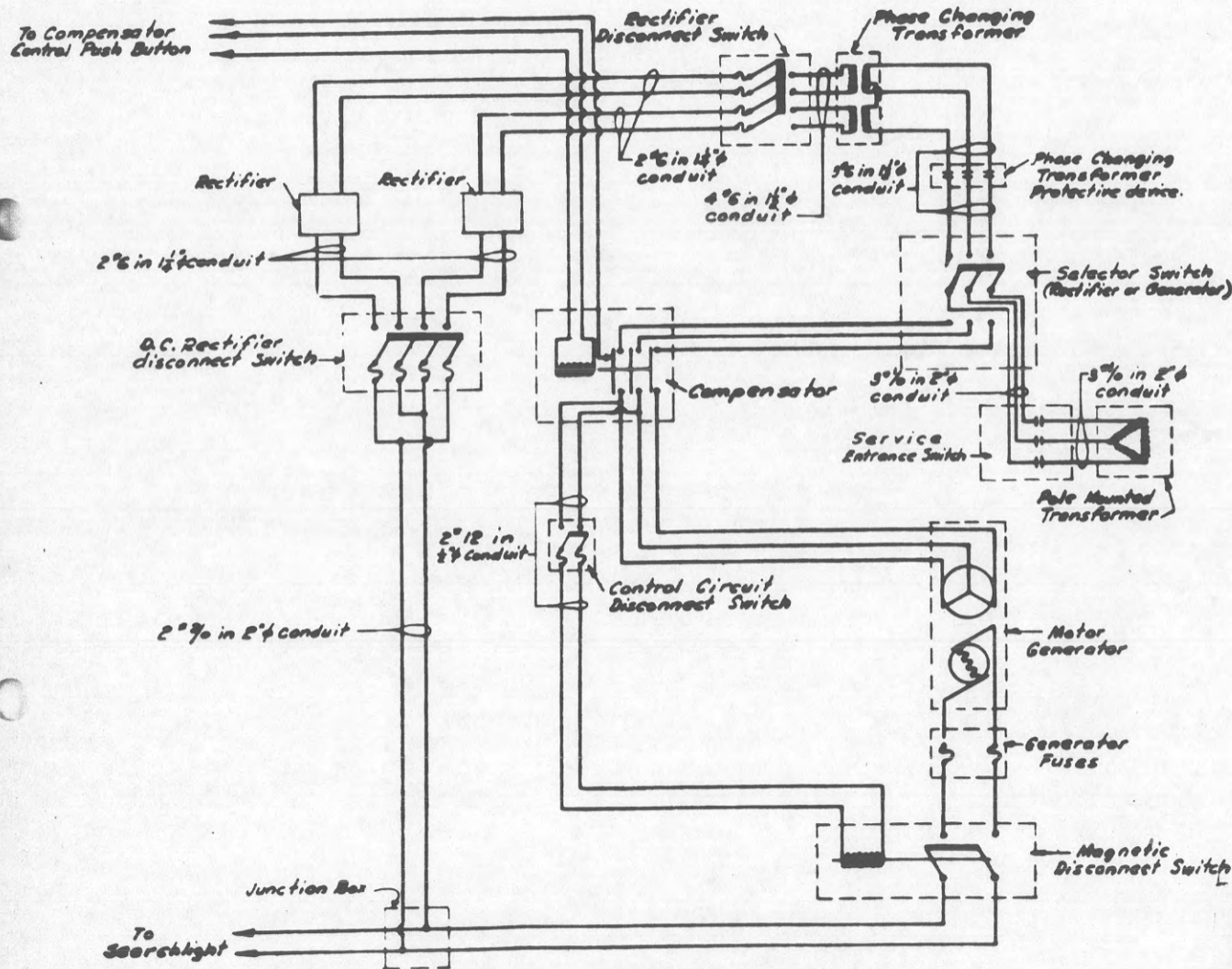
SECRET



STRUCTURE 'A'
NEW LAYOUT

SECRET

HARBOR DEFENSES OF NEW YORK
HARBOR ENTRANCE CONTROL POST
INSTALLATION OF RECTIFIERS
FORT HANCOCK NEW JERSEY



STRUCTURE "A"
WIRING DIAGRAM OF NEW LAYOUT
 Not to Scale

HARBOR DEFENSES OF NEW YORK
 HARBOR ENTRANCE CONTROL POST
 INSTALLATION OF RECTIFIERS
 FORT HANCOCK NEW JERSEY