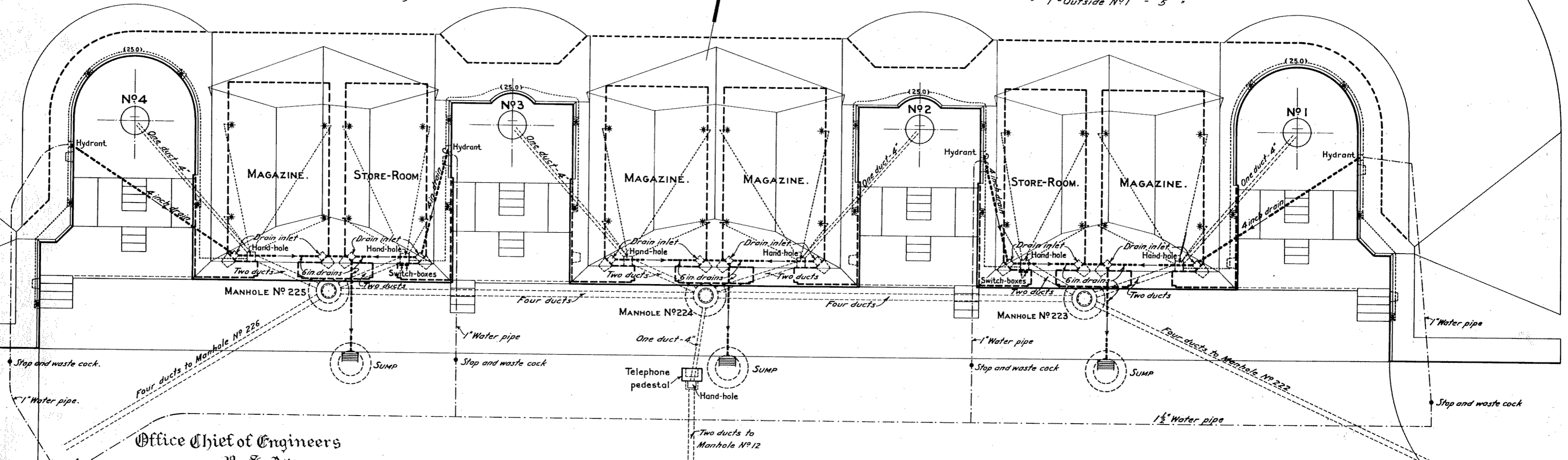
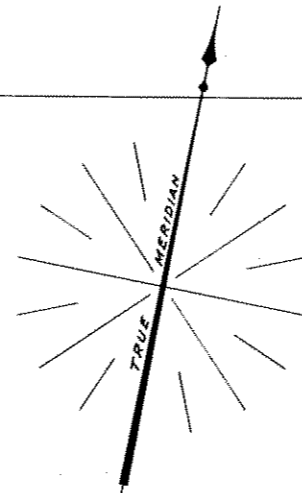


EMPLS. 3-4. Switch 3 - Outside N°4 - 5 lights.
 * 2 - Magazine N°4 - 4 "
 * 1 - Store-room, left - 4 "
 * 3 - Not used
 * 2 - Outside N°3 - 4 "
 * 1 - Magazine N°3 - 4 "

EMPLS. 1-2. Switch 3 - Magazine N°2 - 4 lights.
 * 2 - Outside N°2 - 4 "
 * 1 - Store-room, right - 4 "
 * 3 - Not used
 * 2 - Magazine N°1 - 4 "
 * 1 - Outside N°1 - 5 "



Office Chief of Engineers
 U. S. Army.
 September 14, 1910.
 Respectfully submitted to the
 Secretary of War with recommen-
 dation for approval.

Wael Sigby
 Chief of Engineers.
 U. S. Army.

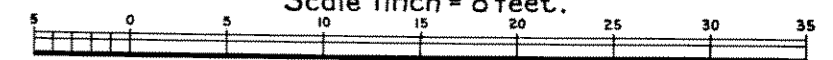
INSTRUCTIONS FOR GARRISON.

1. Floors are graded to fall towards strainers at drain inlets; arrows indicate direction of flow in drains.
2. All drains shall be carefully inspected and cleaned at least once a week. Occasionally the pipes should be flushed by means of hose run from hydrants.
3. The rooms and passages must be swept and all rubbish removed at least once a week; care must be taken that the holes in strainers are kept open and free from dirt; sweepings must be removed to such a place that they will not be carried into the drains by wind or water.
4. Immediately after each rain the earth slopes shall be carefully inspected; any slight tendency to gully or slough shall be at once remedied; any serious gullying shall be at once reported in writing to the District Engineer.
5. No person shall be allowed to walk upon the earth slopes, except when necessary to inspect or repair them.
6. All doors should be opened from daylight until 2 P.M. on clear days when there is a good breeze and temperature is above 60°.
7. Lights (*) are controlled from switch-boxes, located in store-rooms; wires are drawn through sheet-iron tubes, which radiate from the hand-holes; wires for lights on each platform and its adjacent magazine lead through the hand-hole of that magazine. Each interior light is on an independent circuit; outside lights of each emplacement are on a single circuit.

UNITED STATES ENGINEER OFFICE, DISTRICT N° 2, NEW YORK.
DRAINAGE AND ELECTRIC SYSTEMS
BATTERY LEWIS MORRIS,
FORT HANCOCK, N. J.

SEPTEMBER 1910.

Scale 1 inch = 8 feet.



APPROVED

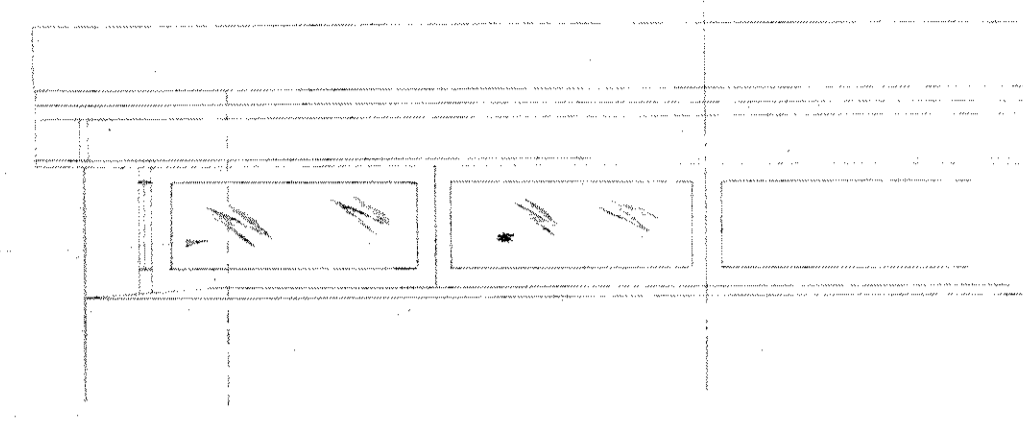
September 9, 1910.

S. W. Kessler
 Colonel, Corps of Engineers, U.S.A.

War Department
 September 17, 1910.
 Approved
Robert Shaw Oliver
 Acting Secretary of War.

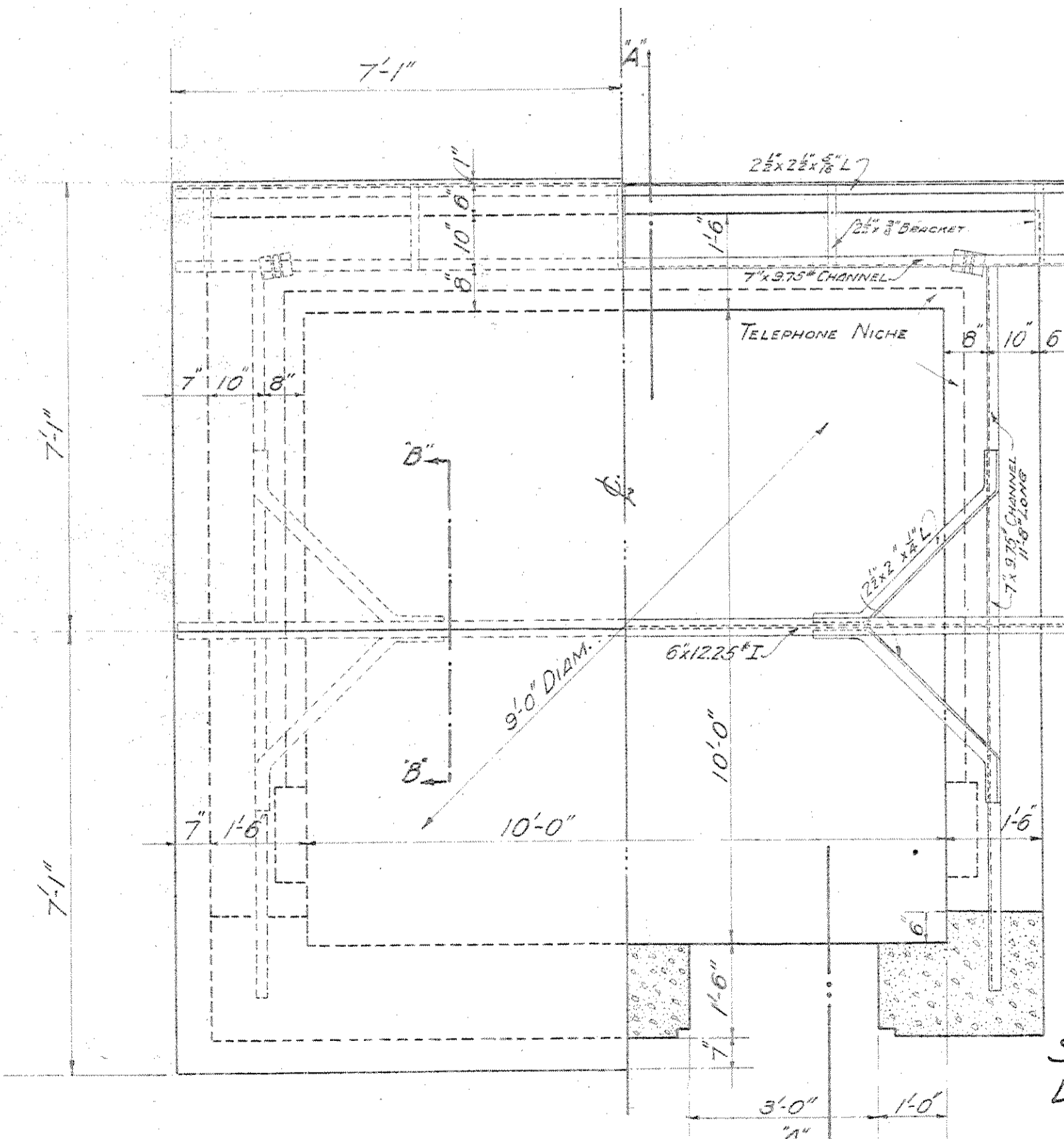
B-37^a-6-2

WOODEN SASH GLAZED WITH PLATE GLASS FRONT & BOTH SIDES



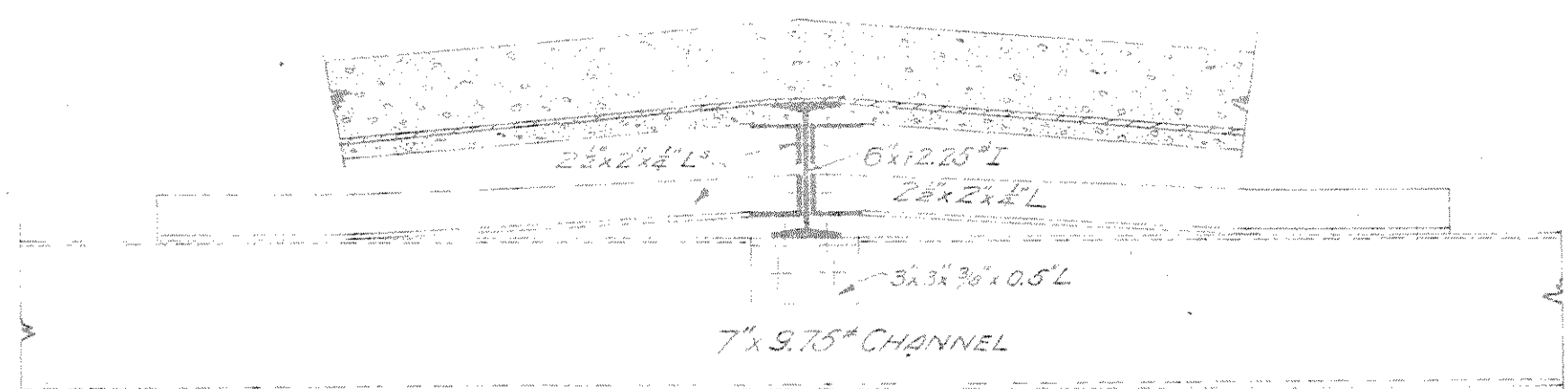
HALF FRONT ELEVATION Scale: 1/2"=1'-0"

Punch 1/2" holes in top and bottom flange of 7x9.75" about 18" c.t.c.

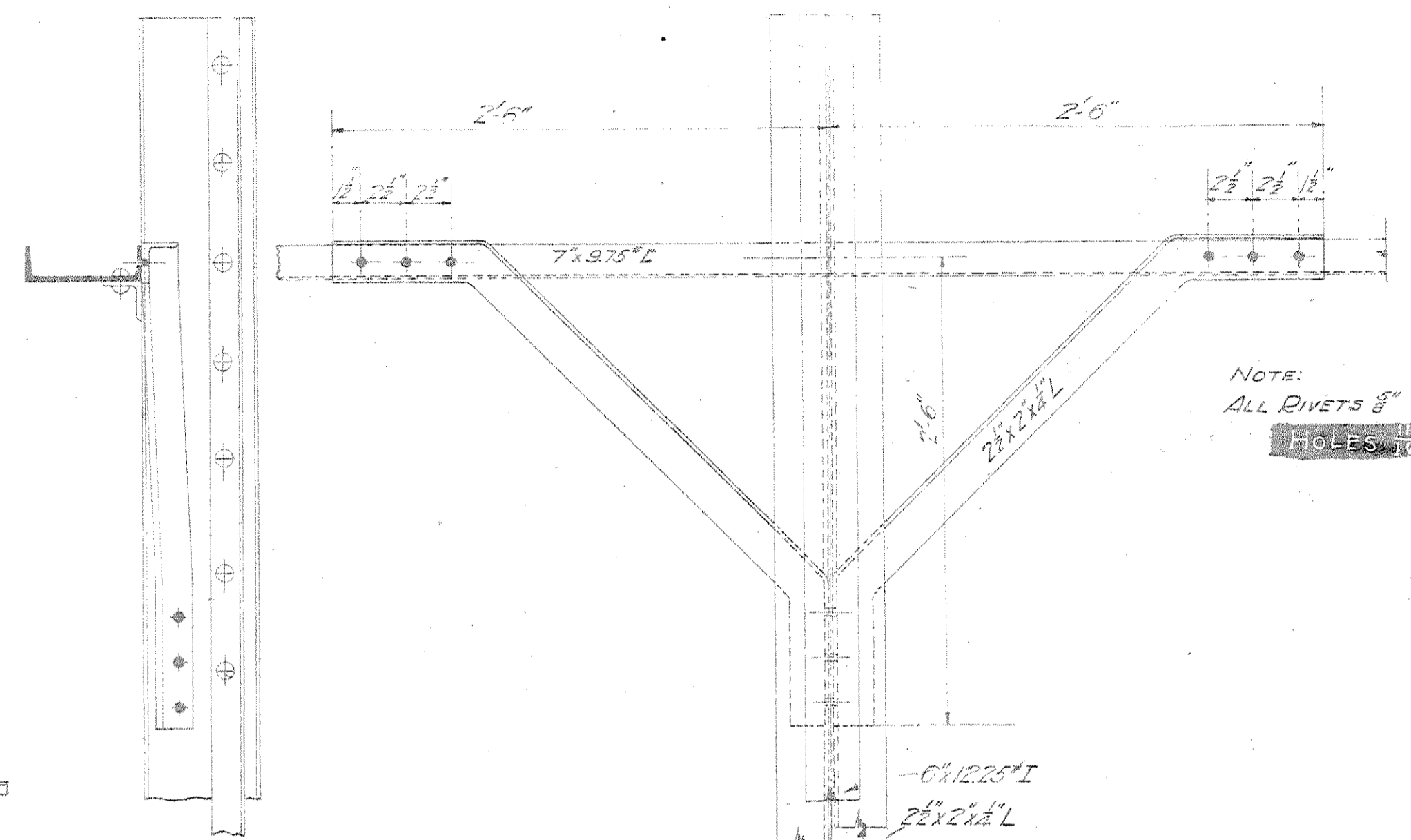


HALF ROOF PLAN. HALF SECTIONAL PLAN Scale: 1/2"=1'-0"

See Sheet No. 2 for Detail of Stairs, Etc.

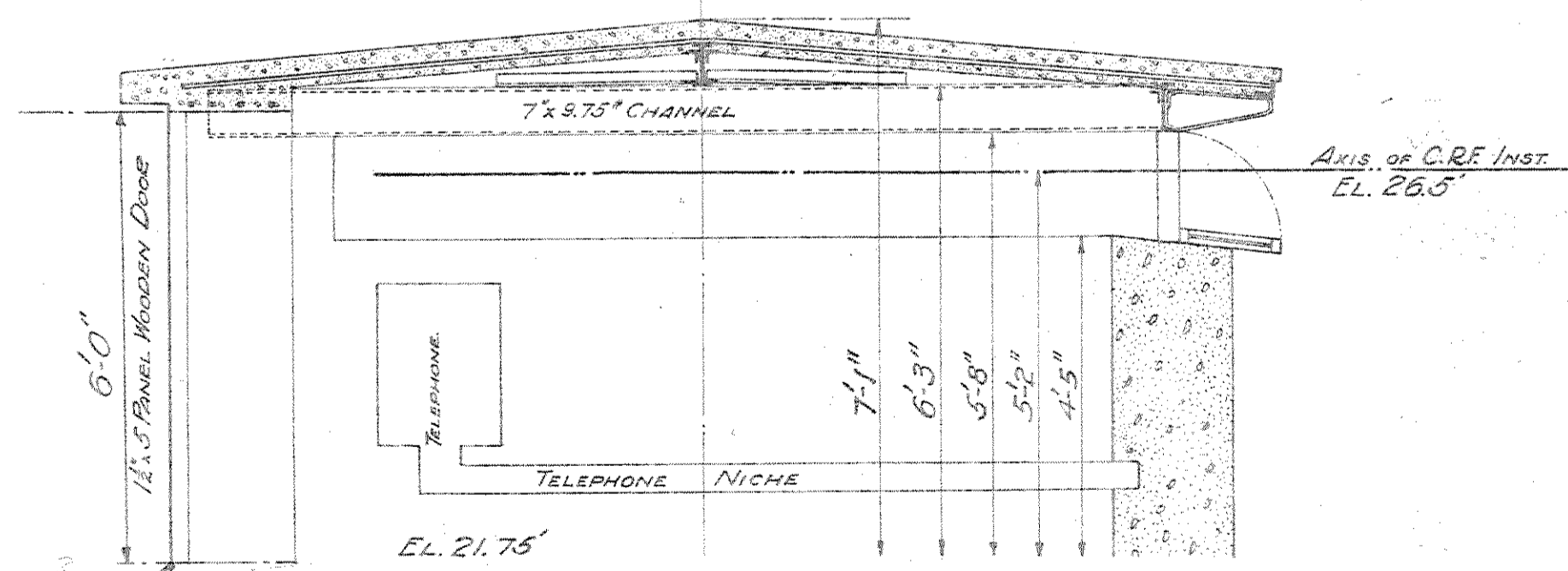


SECTION B-B

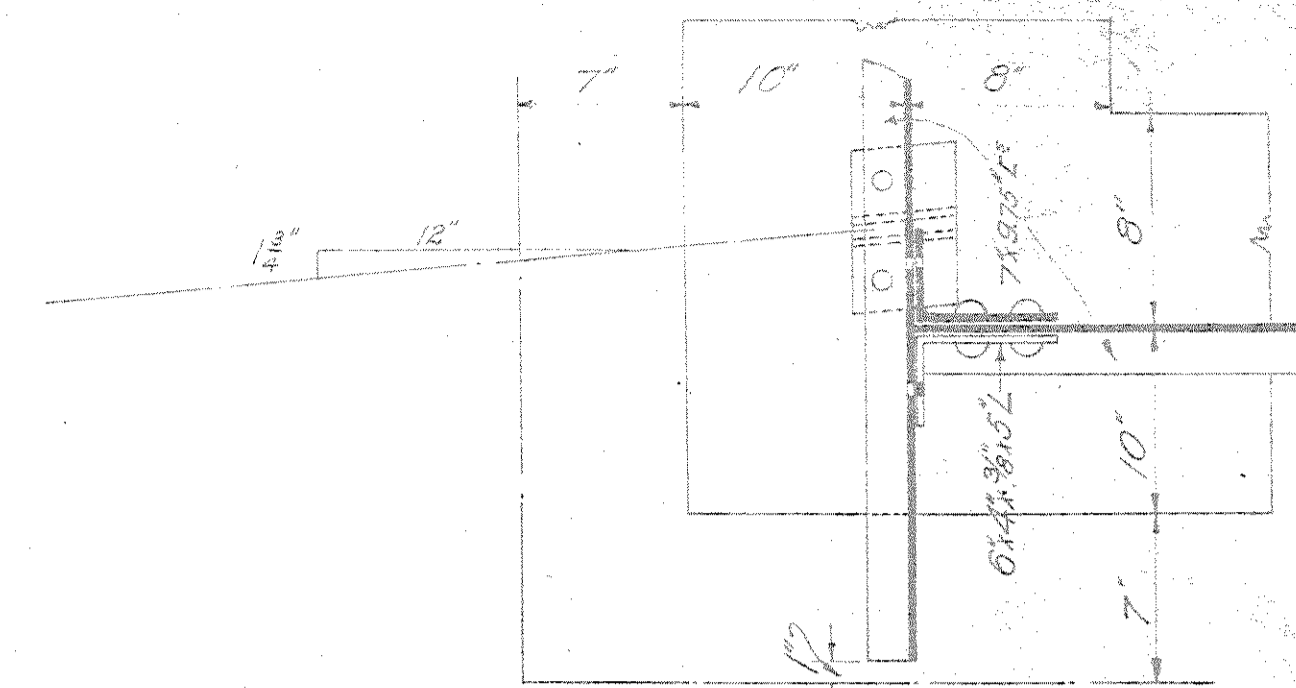


PLAN AND ELEVATION OF ROOF SUPPORTS Scale: 1/2"=1'-0"

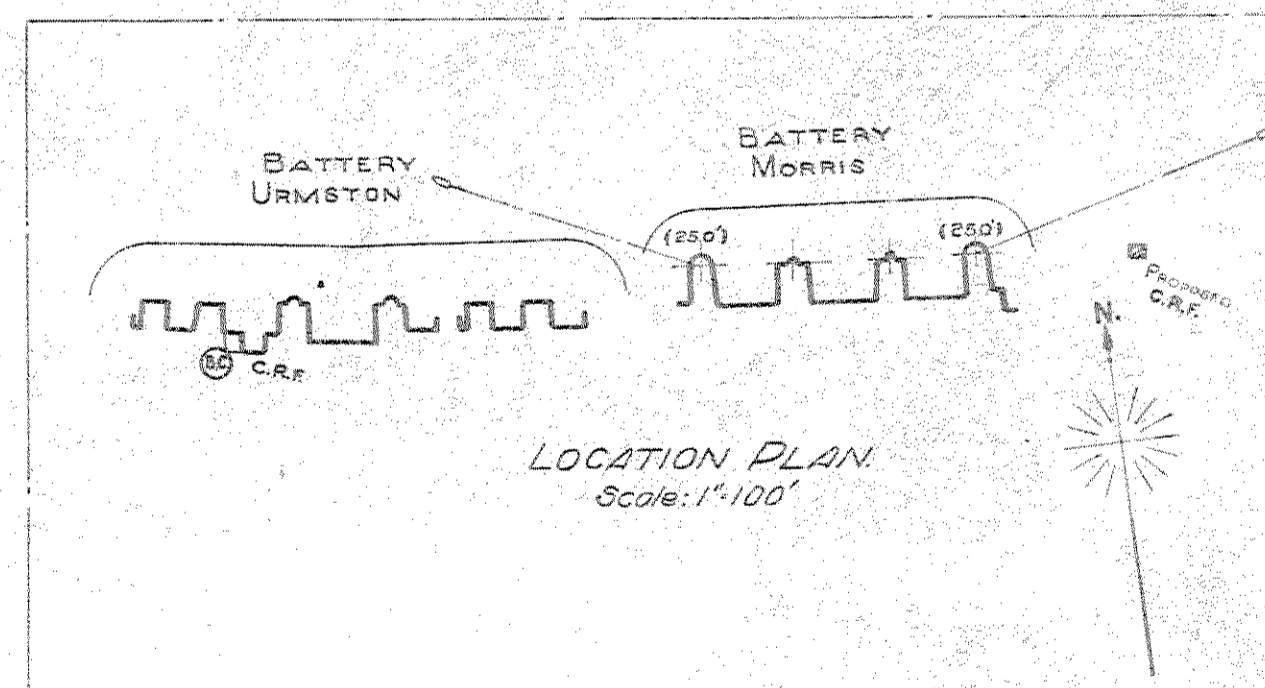
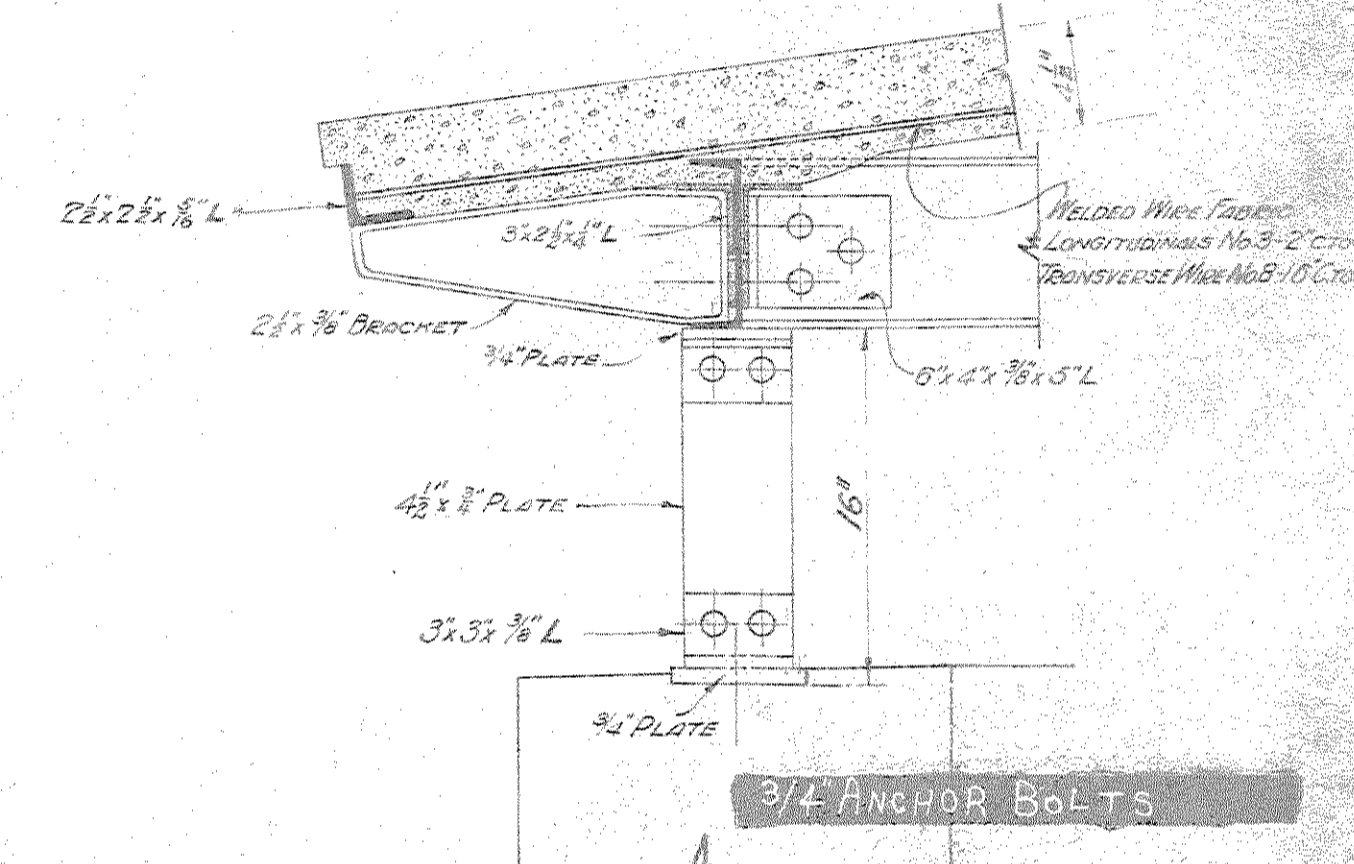
NOTE: ALL RIVETS 3/8" HOLES 9/16"



SECTION A-A Scale: 1/2"=1'-0"



SECTION AT CORNER SUPPORTS Scale: 1/2"=1'-0"



LOCATION PLAN Scale: 1"=100'

FORT HANCOCK, N. J. STATION FOR 9'-0" C. R. F. INSTRUMENT FOR BATTERY MORRIS

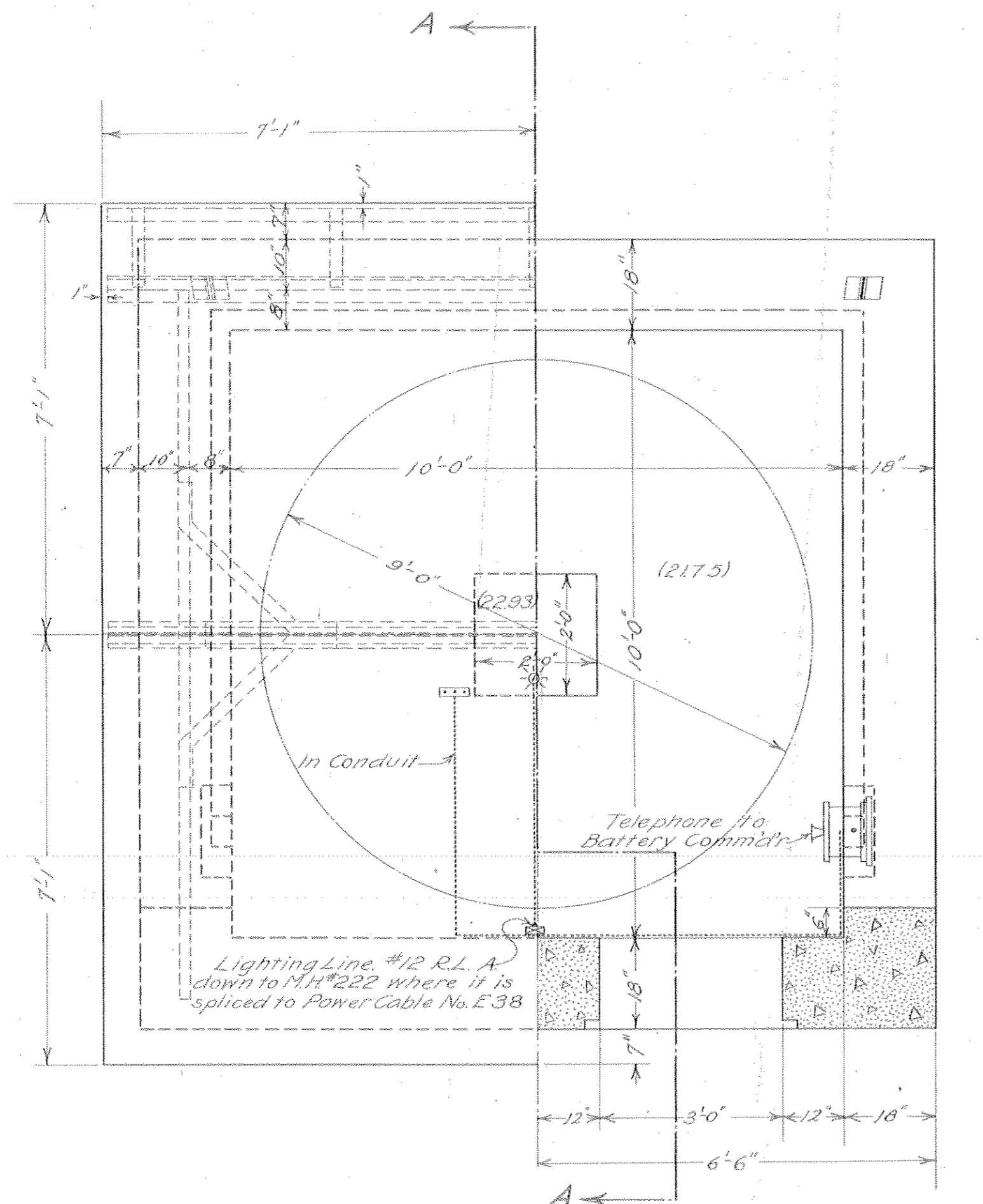
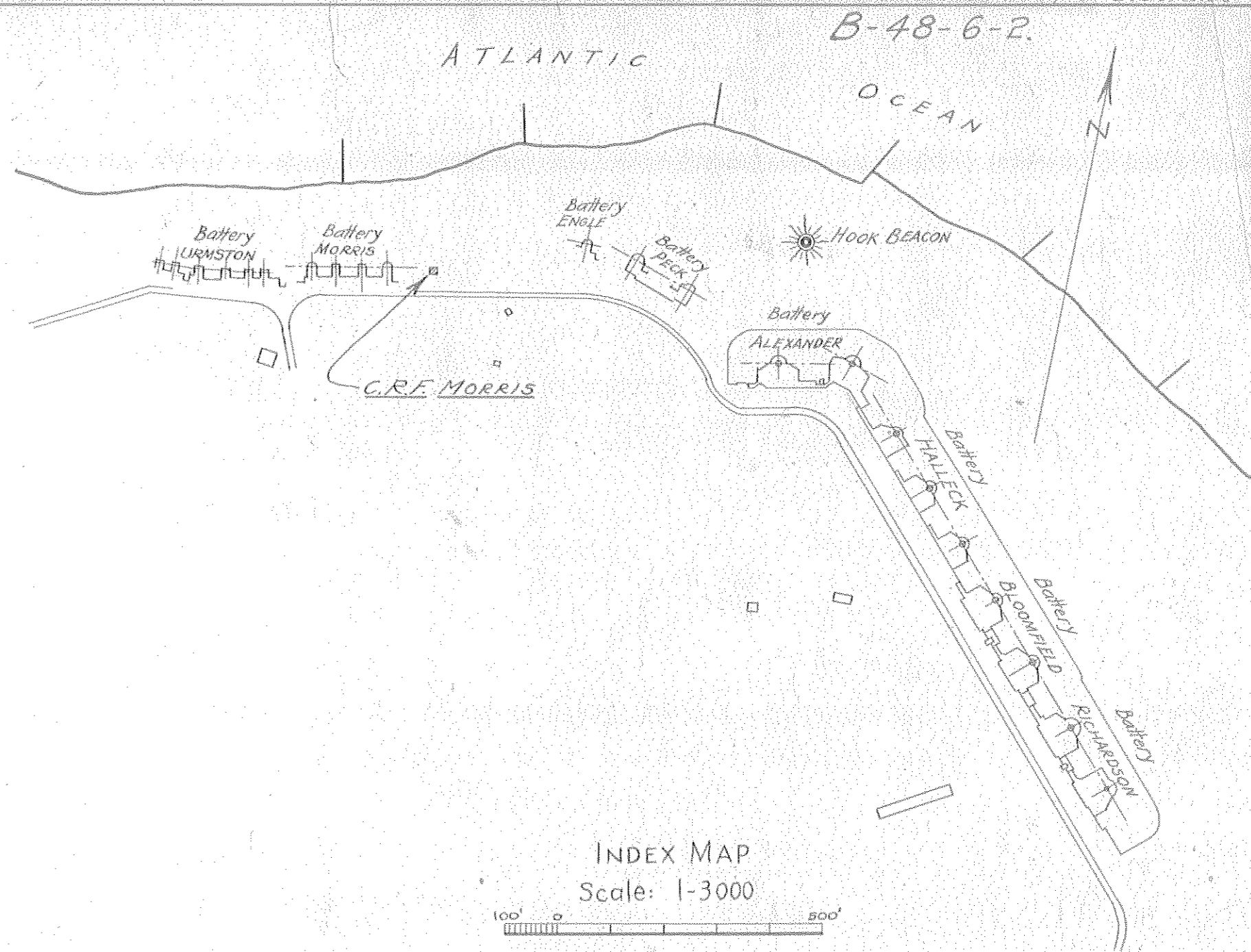
SCALE AS SHOWN U. S. ENGINEER OFFICE, SECOND DISTRICT, NEW YORK CITY

SUBMITTED: O.B. Carman APPROVED: J.W. Paepcke Colonel USA

Drawn by: P.A.F. Traced by: P.A.F. Checked by: G.L.C. FILE NO. HAN. 1377.34 (S.H. Hancock) F-5 DATED JUNE 1919

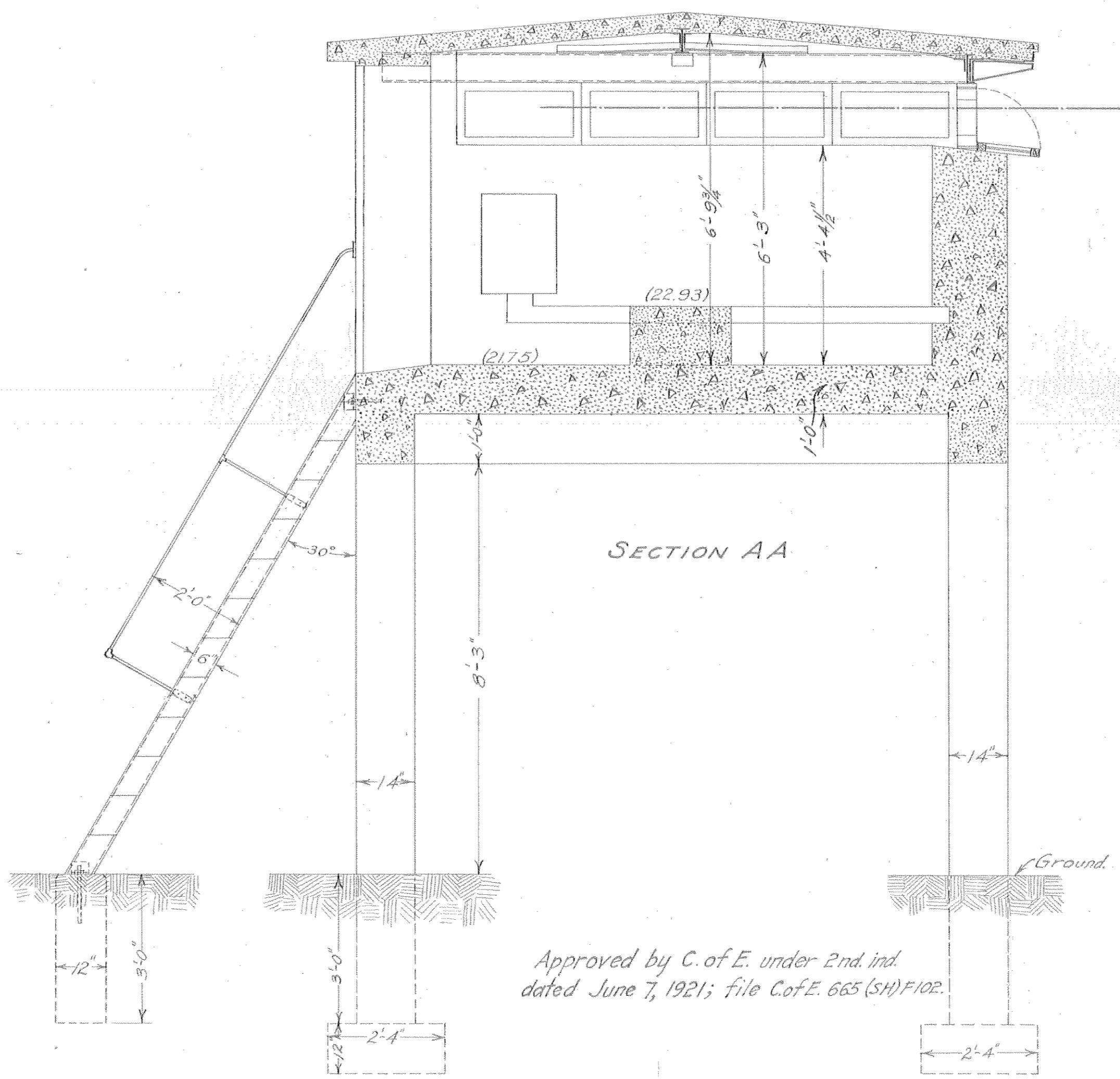
A-9-10 #16

Sheet No. 1.



HALF ROOF PLAN

HALF SECTIONAL PLAN



SECTION AA

Approved by C. of E. under 2nd ind. dated June 7, 1921; file C.of.E. 665 (SH) 102.

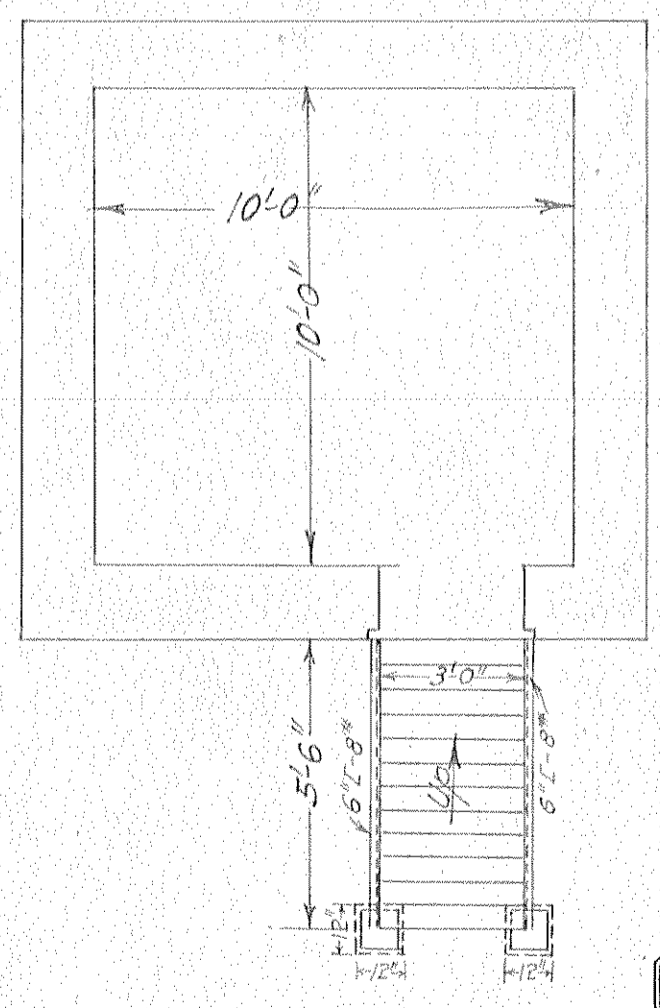
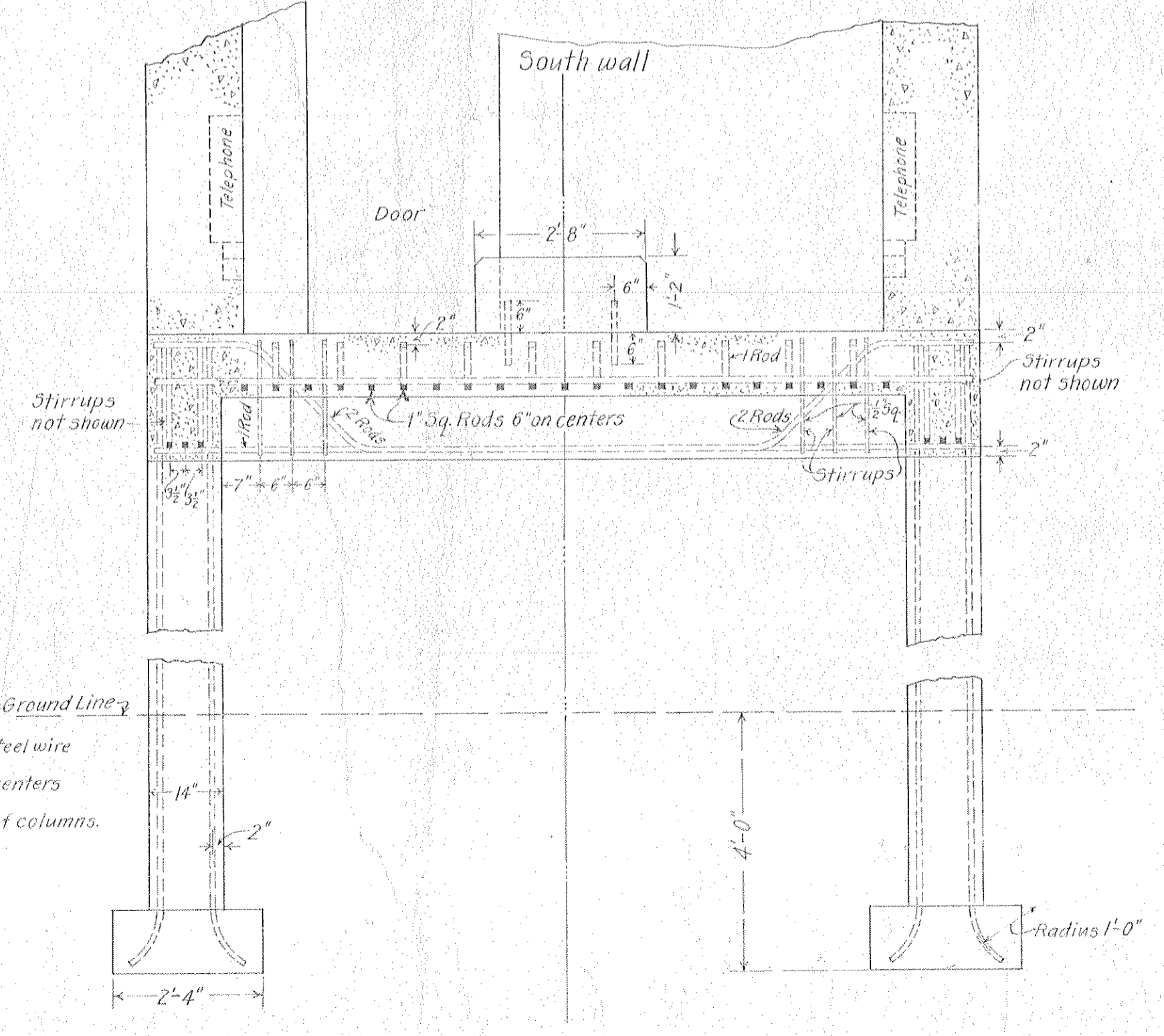
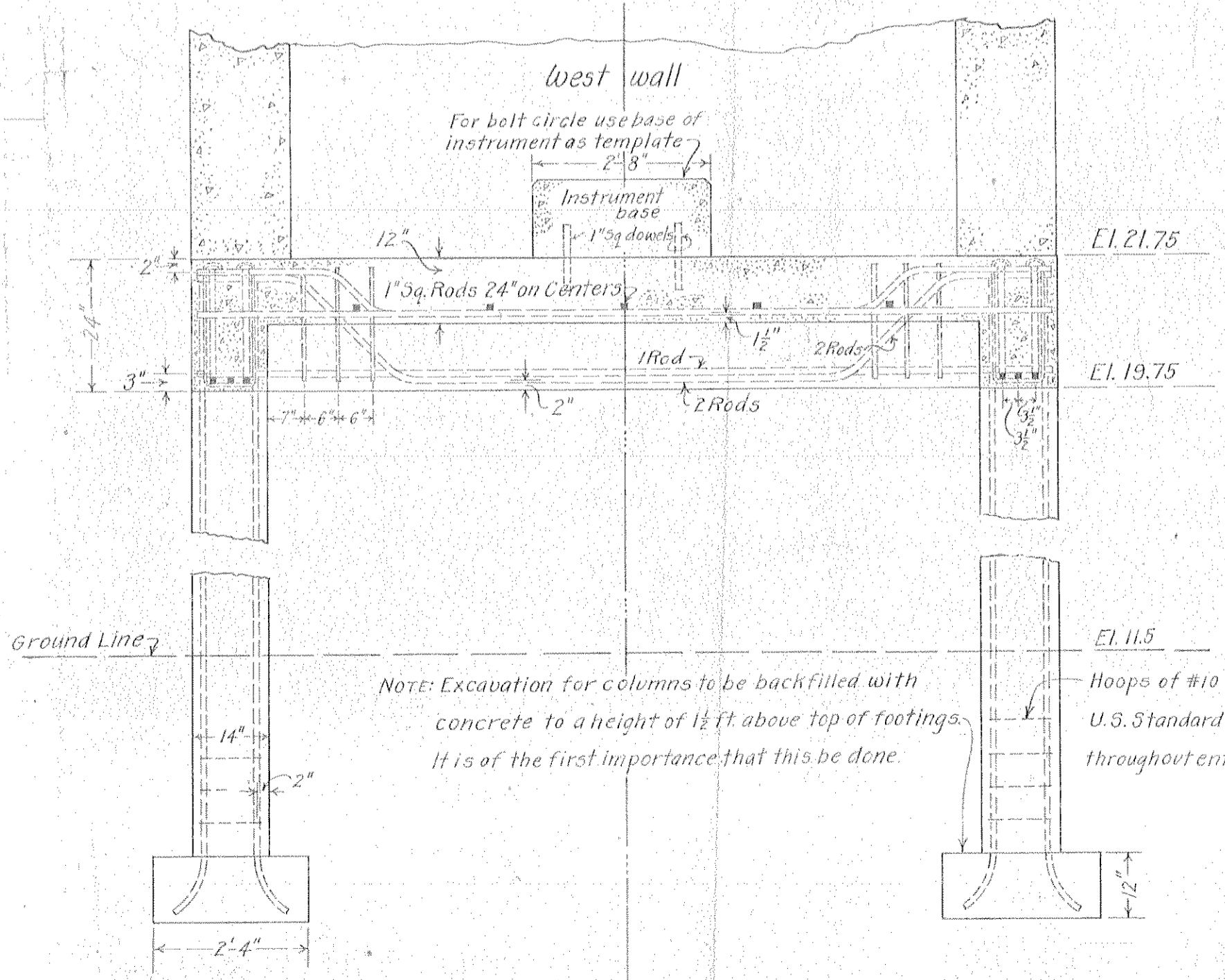
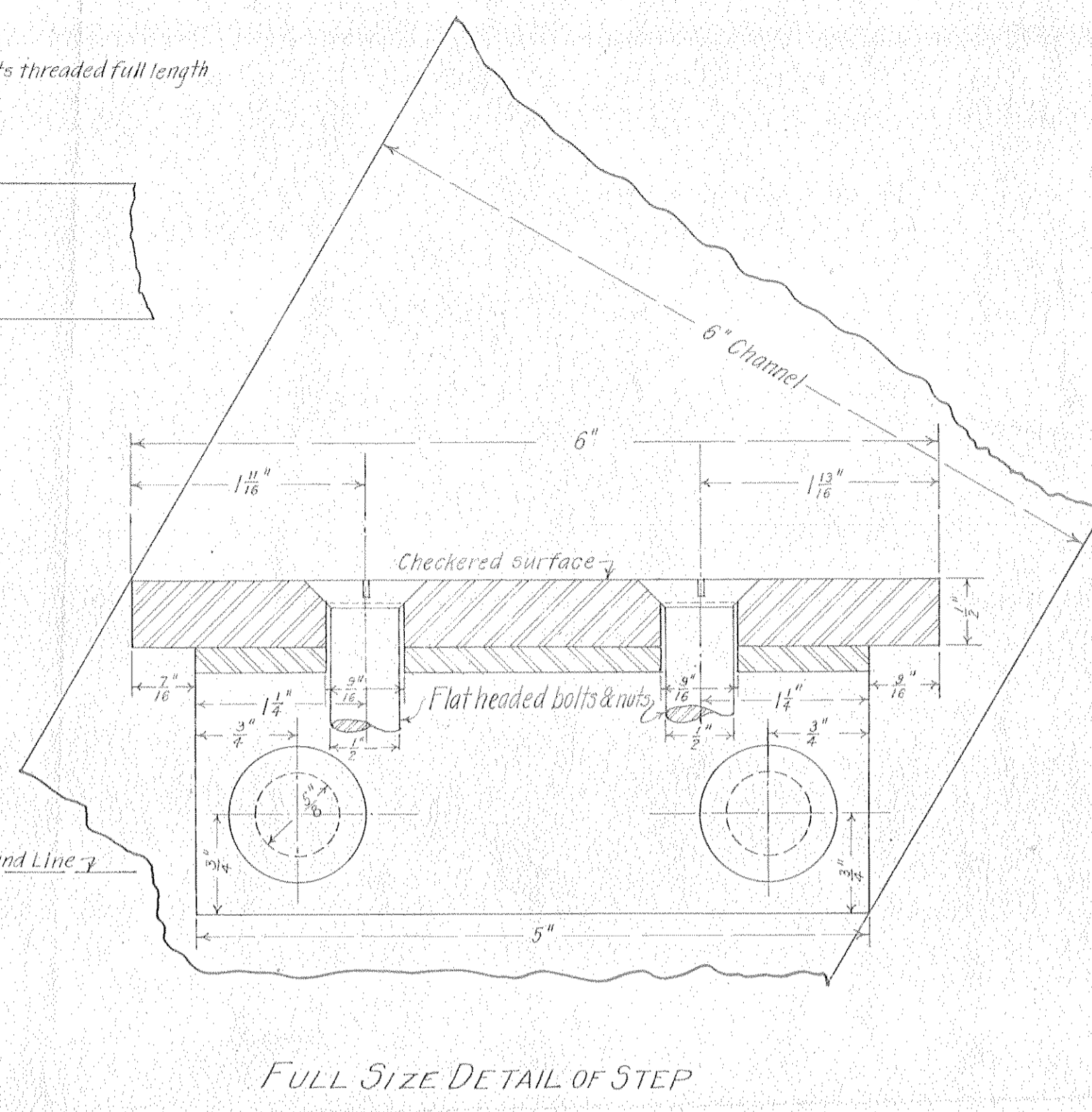
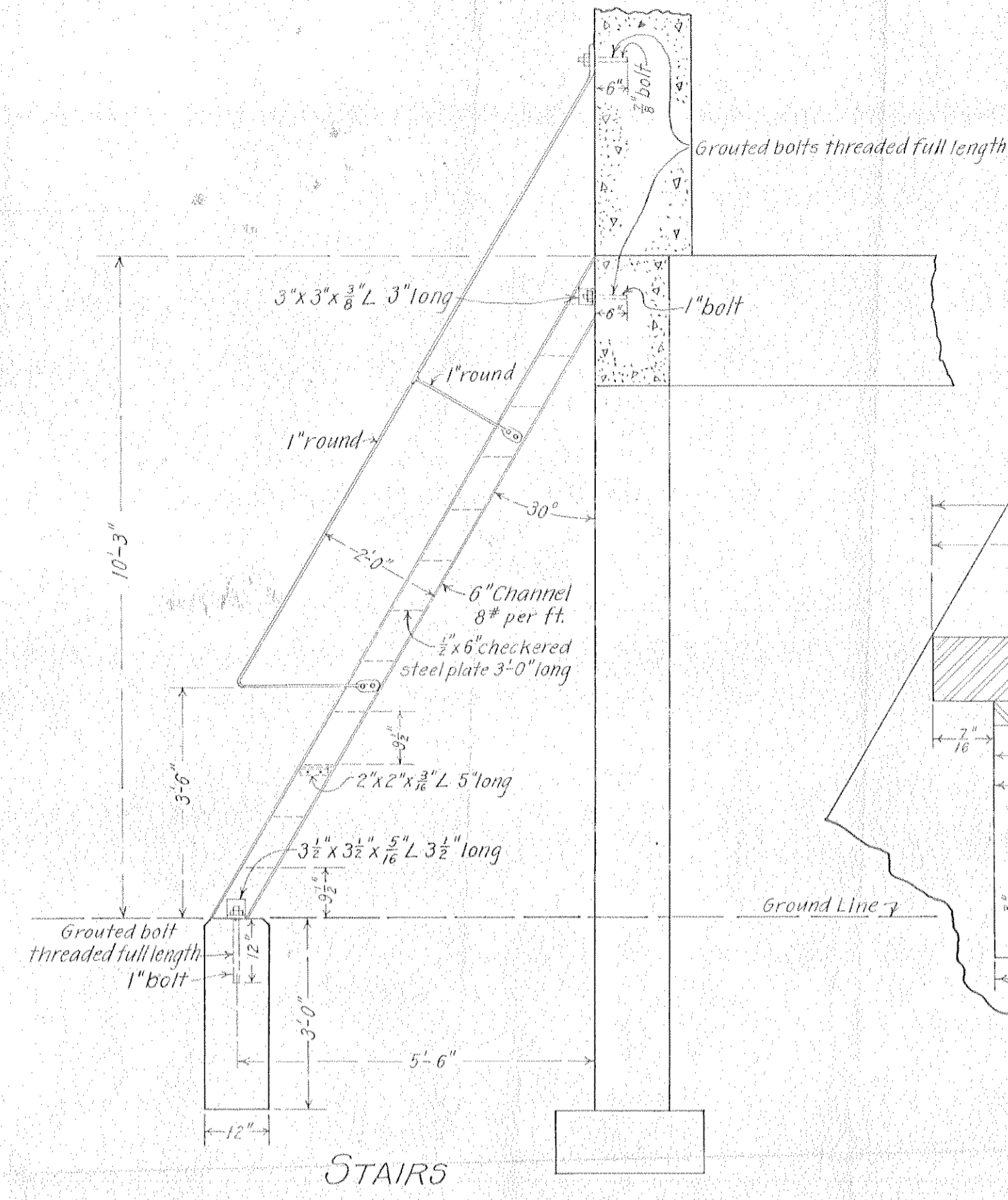
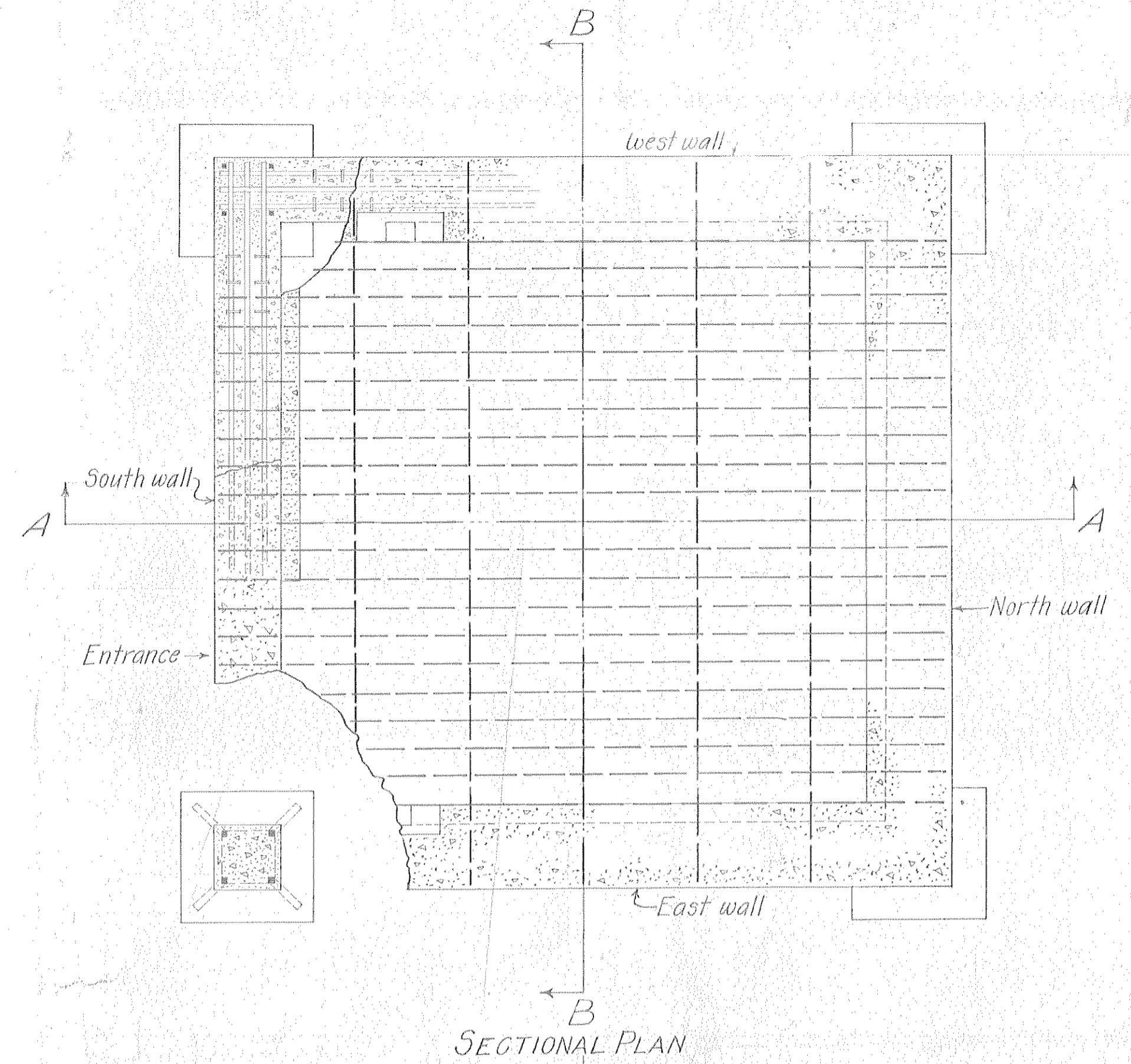
- LEGEND**
- Wall Telephone
 - Terminal Block
 - Snap Switch
 - Ceiling Light Fixture (One Lamp)

COAST DEFENSES OF SANDY HOOK
C. R. F. STATION-BATTERY MORRIS
FORT HANCOCK, N. J.

ONE SHEET
SCALE 1/2 IN. = 1 FT.

Submitted: H. J. Hobbs Assistant Engineer
 Approval Recommended: E. E. W. W. W. Colonel, Corps of Engineers.
 Drawn by: L. S.
 Traced by: L. S.
 Checked by: S. W.
 File No. Hon 1/112.2
 Transmitted with Letter dated May 31, 1921.

B-42-6-2



A-9-16-18

FORT HANCOCK, N.J.
CONSTRUCTION DETAILS FOR C.R.F.
STATION FOR BATTERY MORRIS

U.S. ENGINEER'S OFFICE, 2ND DISTRICT, N.Y. CITY. OCT. 1919.

SUBMITTED: *C.F. Carman*
 JUNIOR ENGINEER

APPROVED: *W. Clauflin*
 COL. CORPS OF ENGINEERS, U.S.A.

DRAWN BY: *A.V.G.*
 TRACED BY: *A.V.G.*
 CHECKED BY: *A.V.G.*

SCALE: 1/2" = 1'-0"