

* LISTED FOR DISPOSAL
400.93 (17.966) 11/4/42

REPORT OF COMPLETED WORKS - SEACOAST FORTIFICATIONS.
(Gun and Mortar Batteries)

COAST DEFENSES OF Sandy Hook

FORT Hancock, N.J.

BATTERY * Halleck

No. of guns 3

Caliber 10"

Carriage Dis

Form 1 Corrected to July 1, 1921

Battery commenced	1896	Sources of electric current	Fort P.P. Bloomfield #1, 25 KW.
Battery Completed	1899	Max. kw. required for lights	Alexander 25 KW.
Date of transfer	Jan. 6, 1900	Max. kw. required for motors	6-1/4 K.W.
Material of construction	Cyclopean con-crete	Present condition battery	40 K.W.
Portland or Rosendale cement	Rosendale	Rooms wet or dry	Good
Cost to date of transfer	\$73,843.08	How ventilated	Fairly dry
Connected to water supply	Yes	Remarks:-	Through doorways, passages and air spaces.
Connected to sewer	-		Battery "Modernized" platforms widened.
Type of latrine	-		
Type of data transmission	Telephone emp. #2; 35.114		
Trunnion elevation in battery	" #3; 35.147		
Datum plane	M.L.W.		

ARMAMENT

Emplacement or mortar No.	Guns or Mortars						Carriages				
	Cal.	Length	Model	Serial No.	Manufacturer	Mounted	Type	Model	Serial No.	Manufacturer	Motor
1											
2	10"		1888	#2	Watervliet Arsenal	Yes 1898	Dis	1896	#8	Niles Tool Works Co.	Yes
3	10"		1888MI	#35	do.	do.	"	"	#18	Southwark F.& M. Co.	Yes
4											
5											
6											
7	See		660.2-18,	10lb Ind.,	Remove breech mechanisms,						
8			reporting to	Chief of Ordnance for	shipping						
						HOISTS			future use in connection with mounting 12" rwy. mounts.		

Note: No. 1 gun dismantled.

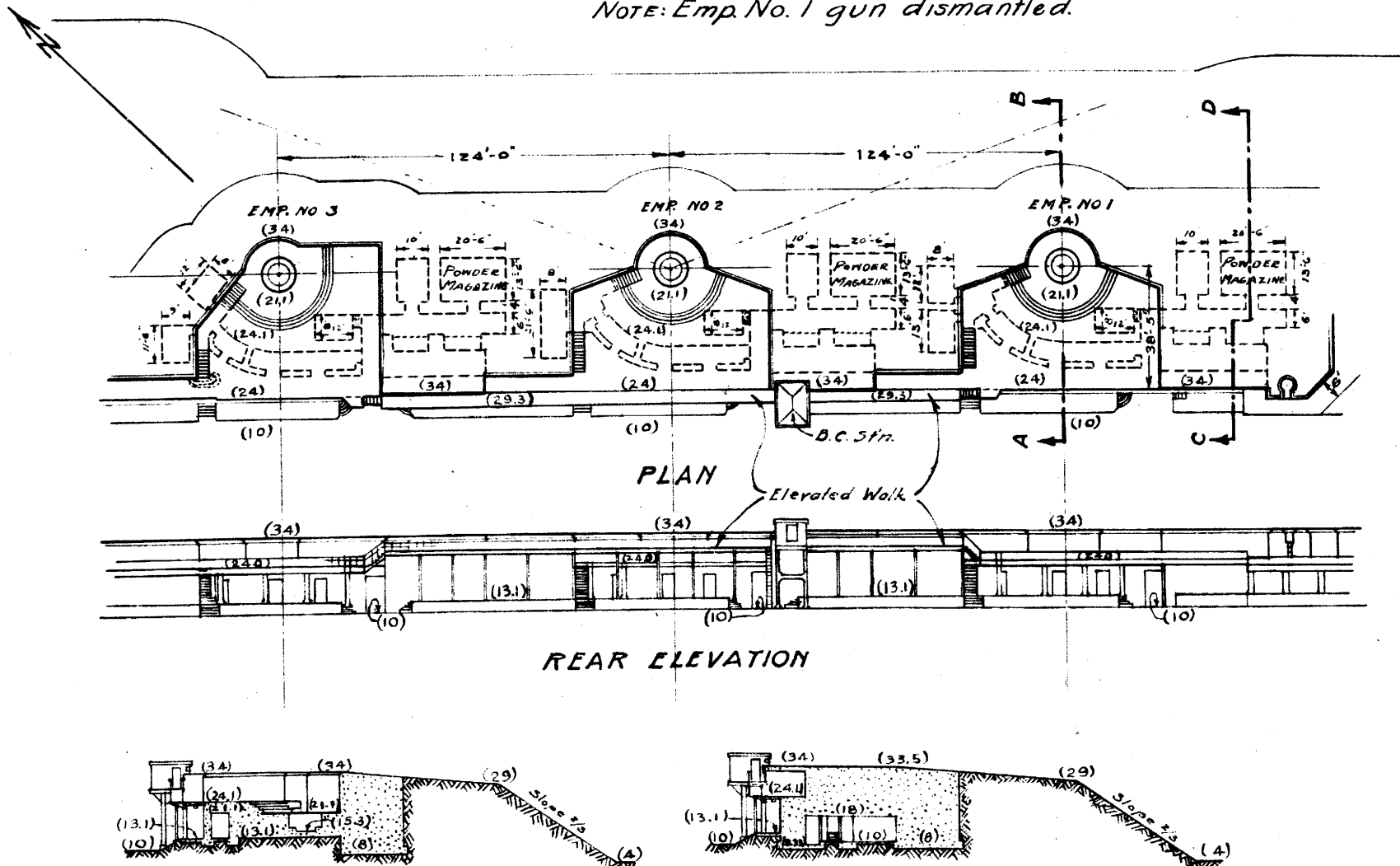
instructions. Gun #2 fired 201 rounds, and gun #35 fired 111 rounds.

Emplacement Number	Type	Delivery	Motor					Type of control	Date of transfer	Remodeled for long points
			Serial No.	Maker	H.P.	Volts	RPM			
1	Removed ←									
2	T.R.	Back	91169	G.E.	5	110	1060	R 67	July 6, 1905	Yes
3	T.R.	"	90395	G.E.	5	110	1060	R 67	do.	Yes
Power hoist	#2 A	"	193469	G.E.	3	110	1060	R 96A	Aug. 17, 1911.	-
	#3 A	"	179102	G.E.	3	110	1060	R96A		

Corrected to July 1, 1921



NOTE: Emp. No. 1 gun dismantled.



SECTION A-B

SECTION C-D

REPORT OF COMPLETED WORKS - SEACOAST FORTIFICATIONS

COAST DEFENSES OF SANDY HOOK.
FORT HANCOCK.

BATTERY HALLECK.

No. of Guns 2

Caliber 10"

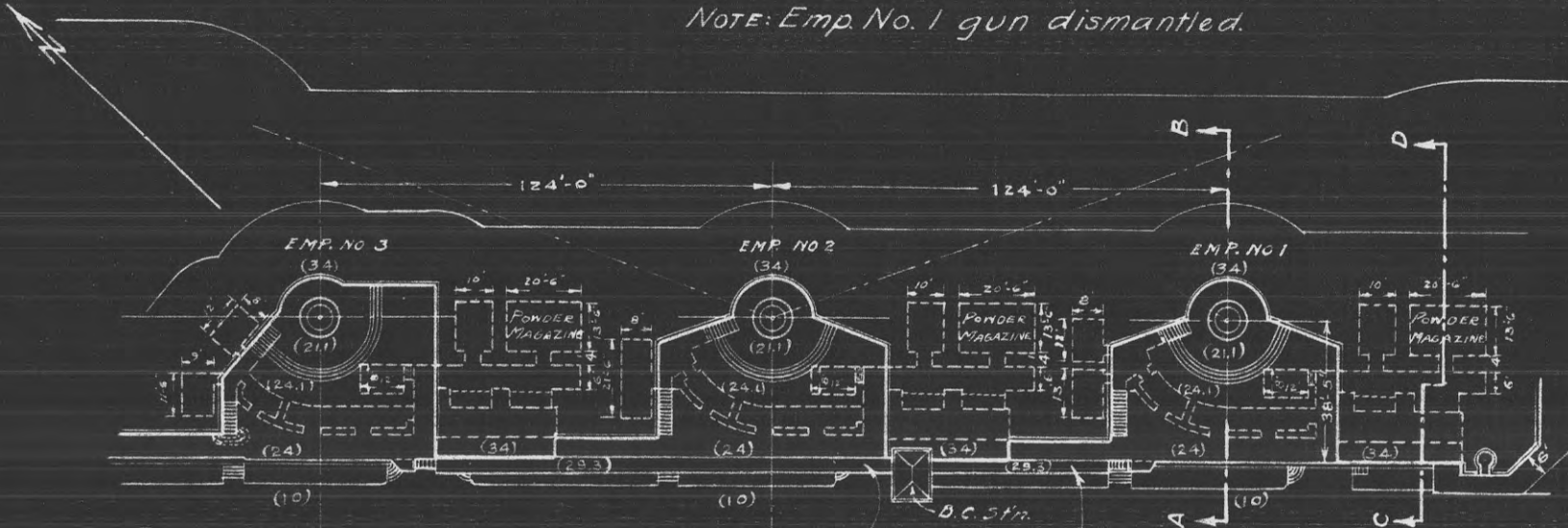
Carriage Dis.

Corrected to July 1, 1921

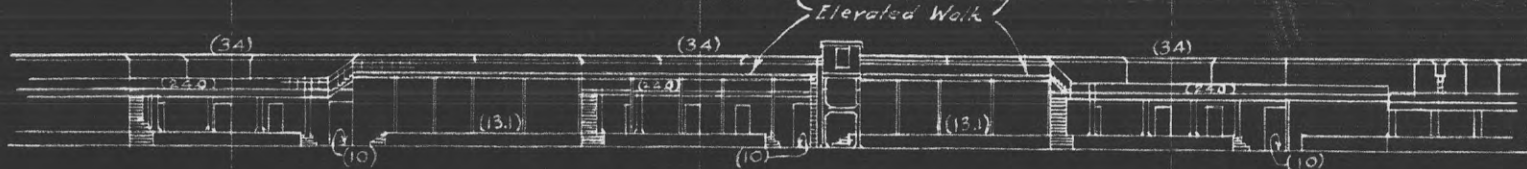
Scale: - 1" = 50'



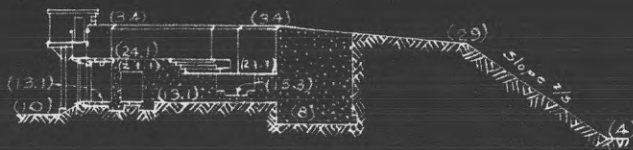
NOTE: Emp. No. 1 gun dismantled.



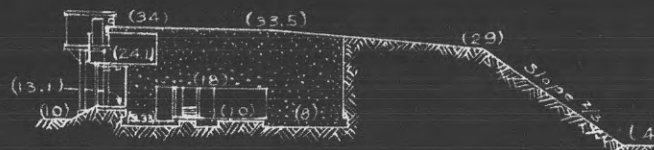
PLAN



REAR ELEVATION



SECTION A-B



SECTION C-D

COAST DEFENCES OF Sandy Hook

FORT Hancock

BATTERY Halleck

NO OF GUNS: 3 CALIBER: 10"

	EMPLACEMENT NUMBER 1	EMPLACEMENT NUMBER 2	EMPLACEMENT NUMBER 3	EMPLACEMENT NUMBER 4					
1-a. Azimuth	137° -30'	137° - 30'	137° -50'						
b. Distance	124'	124'	124'						
2-a Model of Gun	^{1888 MI} 1888 #57	1888 #2	^{1888 MI} 1888 #35						
b. Carriage	1896 #45	1896 #8	1896 #18						
c. Type of	Dis.	Dis.	Dis.						
3- Elevations of	-	-	-						
a. Gun trunnions (in battery)	35.48	35.48	35.48						
b. Interior crest	33.82	33.86	33.84						
c. Loading platform	24.1	24.1	24.1						
4- Angle of depression	0°	0°	0°						
5- Limiting azimuths of field of fire as determined by:	FROM	TO	FROM	TO	FROM	TO	FROM	TO	
	0	0	0	0	0	0	0	0	
	a. Construction of emplacement	157.23	295.84	155.70	295.56	117.95	288.90		
	b. Interference by adjacent emplacements	157.23	295.84	155.70	295.56	142.40	288.90		
	c. Interference of other obstacles external to emplacement	157.23	295.84	155.70	295.56	117.95	142.30	143.70	288.90
d. Position of Ordnance stops	166.83	288.24	167.30	288.56	117.95	277.40			

NOTES.

1. Azimuth and distance of emplacement No. 2 are given with reference to No. 1, of No. 3, with reference to No. 2, etc. Azimuth and distance of No. 1, are given with reference to **#2 Bloomfield gun center**

3. Above plane of **M. L. W.**

5-c Nature of obstacles: **Hook Beacon - Dead angle -142°30 to 143°70**

2-c Use one of following abbreviations or designations: Dis., Nondis., All gun-lift, Turret, Casemate, Ped., B.P.

Note: Changes in red based on information received informally from Ordnance Dept.

[Signature]

REPORT OF COMPLETED WORKS - SEACOAST FORTIFICATIONS.
(Fire control and torpedo structures)

COAST DEFENSES OF Sandy Hook

FORT Hancock, N.J.

STRUCTURE B.C. Station - Halleck.

Form 2 Corrected to July 1, 1921

Location	On center traverse of Battery Halleck.	Type of data transmission	:	-
Date of transfer	Sept. 20, 1907.	Date of transfer	:	-
Cost to date	\$5000.00	Cost of data transmission equipment.	:	-
Type of construction	Concrete	For tide stations give description of tide gauge.	:	-
(a) Roof	Concrete	For datum points give Forts from which visible	:	-
(b) Remainder of building	Partially by Bty. Halleck	For dormitories give stations served	:	-
How concealed	do.	For cable hut give S.C. type	:	-
How protected	About 3 ft.		:	
Height above concealment	do.		:	
Height above protection	Yes		:	
Conspicuous at 5000 + yards	C.P.P. Bloomfield & Alexander 25 KW. Sets		:	
Source of electric current	.2KW.		:	
Kilowatts required	Wall lamps		:	
Type of lighting fixtures	No heat		:	
How heated	No		:	
Connected to water mains	None		:	
Connected to sewer	Permanent		:	
Type of latrine	Good		:	
Permanent or temporary installation	10.0 ft. above m.l.w.		:	
Present condition	35.25 ft. do.		:	
Reference of site	None mounted.		:	
Reference of instrumental axis			:	
Type of observing instrument			:	
Type of plotting board			:	
Type and capacity of crane			:	
Max. dimensions of reel handled			:	

