

REPORT OF COMPLETED WORKS - SEACOAST FORTIFICATIONS.

(Gun and Mortar Batteries)

COAST DEFENSES OF Sandy Hook

PORT Hancock, N.J.

* BATTERY Gunnison.

Form 1

Corrected to March 1, 1922.

No. of guns 2 Caliber 6" Carriage Dis. L.F.

Battery commenced	: 1903	: Sources of electric current	: C.P.P. Bloomfield and Alexander
Battery completed	: 1905		: 25 K.W. sets.
Date of transfer	: Dec. 5, 1905	: Max. kw. required for lights	: 3½ K.W.
Material of construction	: Concrete.	: Max. kw. required for motors	: -
Portland or Rosendale cement	: Portland.		
Cost to date of transfer	: \$45,000.00		
Connected to water supply	: Yes.	: Present condition battery	: Good.
Connected to sewer	: Concrete cess- pool	: Rooms wet or dry	: Dry.
Type of latrine	: -		
Type of data transmission	: Telephone	: How ventilated	: Through doorways and passages.
Trunnion elevation in battery	: 28 ft. ±	: Remarks:-	
Datum plane	: M.L.W.		

ARMAMENT

Emplacement :		Guns or Mortars	:			Carriages				
or mortar No:			:							
Mounted :	Cal :	Length :	Model :	Serial No:	Mfgr :	Type :	Model :	Serial No.:	Mfgr. :	Motor
1	Yes	6 inch :	1903 :	5	Watervliet	Dis.L.F.	1903 :	52	-	-
2	Yes	6 inch :	1903 :	34	"	Dis.L.F.	1903 :	57	-	-
3	:	:	:	:	:	:	:	:	:	:
4*	:	:	:	:	:	:	:	:	:	:
5	<i>D.C. guns to be removed & armament of Btry. Peck to be relocated</i>									
6	<i>to this emplacement. - Approved by C.O. S. 2/18/43 - 262 (New York) CM 30362A</i>									
7										
8	<i>Authority for transfer of this work granted: 10/28/43</i>									

HOISTS

Emplacement:	Type :	Delivery :		Motor		Date of :	Period of			
Number :	:	:	Serial No.:	Maker :	H.P. :	Volts :	RPM :	Type of control:	transfer:	points.
1	:	:	:	:	:	:	:	:	:	:
2	:	:	:	:	<u>NONE</u>	:	:	:	:	:
3	:	:	:	:	:	:	:	:	:	:

Superseded - see Form 1 corrected to 11/10/43

REPORT OF COMPLETED WORKS - SEACOAST FORTIFICATIONS

COAST DEFENSES OF SANDY HOOK.
FORT HANCOCK.

BATTERY GUNNISON.

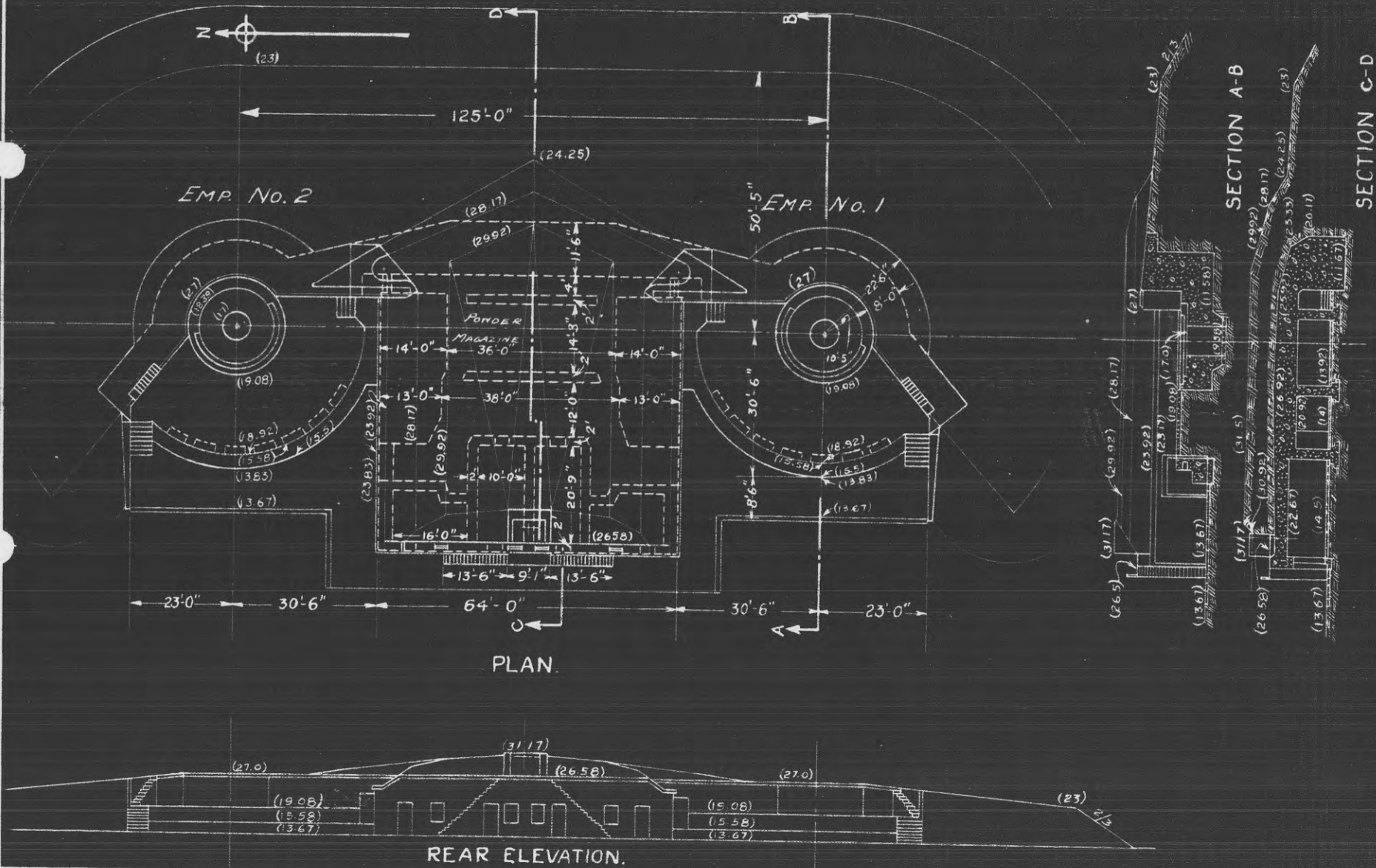
No. of Guns 2.

Caliber 6" R.F.

Carriage Dis.

Corrected to July 1, 1921.

Scale 1"=30'



60,914 (New York) CM 69866
 REPORT OF COMPLETED WORKS - SEACOAST FORTIFICATIONS
 (Batteries)

HARBOR DEFENSES OF NEW YORK
 FORT HANCOCK, NEW JERSEY
 BATTERY GUNNISON Peck No. of Guns 2
 Caliber 6" Carriage Barbette

SPEKM-1

Part I Corrected to 10 November 1943

Now Designated New Batt. Peck

GENERAL:

Battery commenced 1903
 Battery completed 1905
 Date of transfer 5 December 1905
 Cost to date of transfer \$45,000.00
 Materials of construction Concrete
 Battery new or modernized Modernized
 (If modernized give detailed statement
 on reverse side) Gun No. 1 - El. 26.608
 Trunnion elevation in btry. Gun No. 2 - El. 26.570
 Datum plane Mean Sea Level

UTILITIES:

WATER SUPPLY

Source of
 Alternate source
 Size of Main

SEWER

Connected to sewer No.
 Type of Disposal Concrete cesspool
 Type of Latrine None

UTILITIES (Cont'd.)

ELECTRIC POWER Central Power Plant
 Sources of Bloomfield & Alexander 25 KW Sets.
 Procured & installed by (OCE or ORD)
 Characteristics: Voltage Ac or DC Phase
 No. of units and capacity
 Max. K.W. required for utilities
 Max. K.W. required for non-battle conditions
 Commercial power provided (yes or no) Capacity
 Auxiliary power unit provided (yes or no) Capacity
 Type of lighting fixtures
 Dehumidifying Unit.. Make and capacity
 Rooms Wet or Dry Dry
 How ventilated
 How heated
DATA TRANSMISSION
 Type Telephone

REMARKS

See Attached Sheet.

ARMAMENT

Emplacement No.	Cal.	Length	Model	Guns		Mounted	Type	Carriages			
				Serial No.	Manufacturer			Model	Serial No.	Manufacturer	Motor
1	6"	50 Cal.	1900	27	Watervliet Arsenal		Barbette	1900	12	Rock Island	None
2	6"	50 Cal.	1900	28	"	"	"	1900	17	Watervliet Arsenal	None
3											

SECRET

207

loading platforms see Sandy Hook Proj Carl #59

Nature & Cost of Additional Modifications

1943

2-6" Guns from Battery Peck installed at Battery Gunnison.
Platforms raised and extended. Plotting Room installed and
gasproofed.

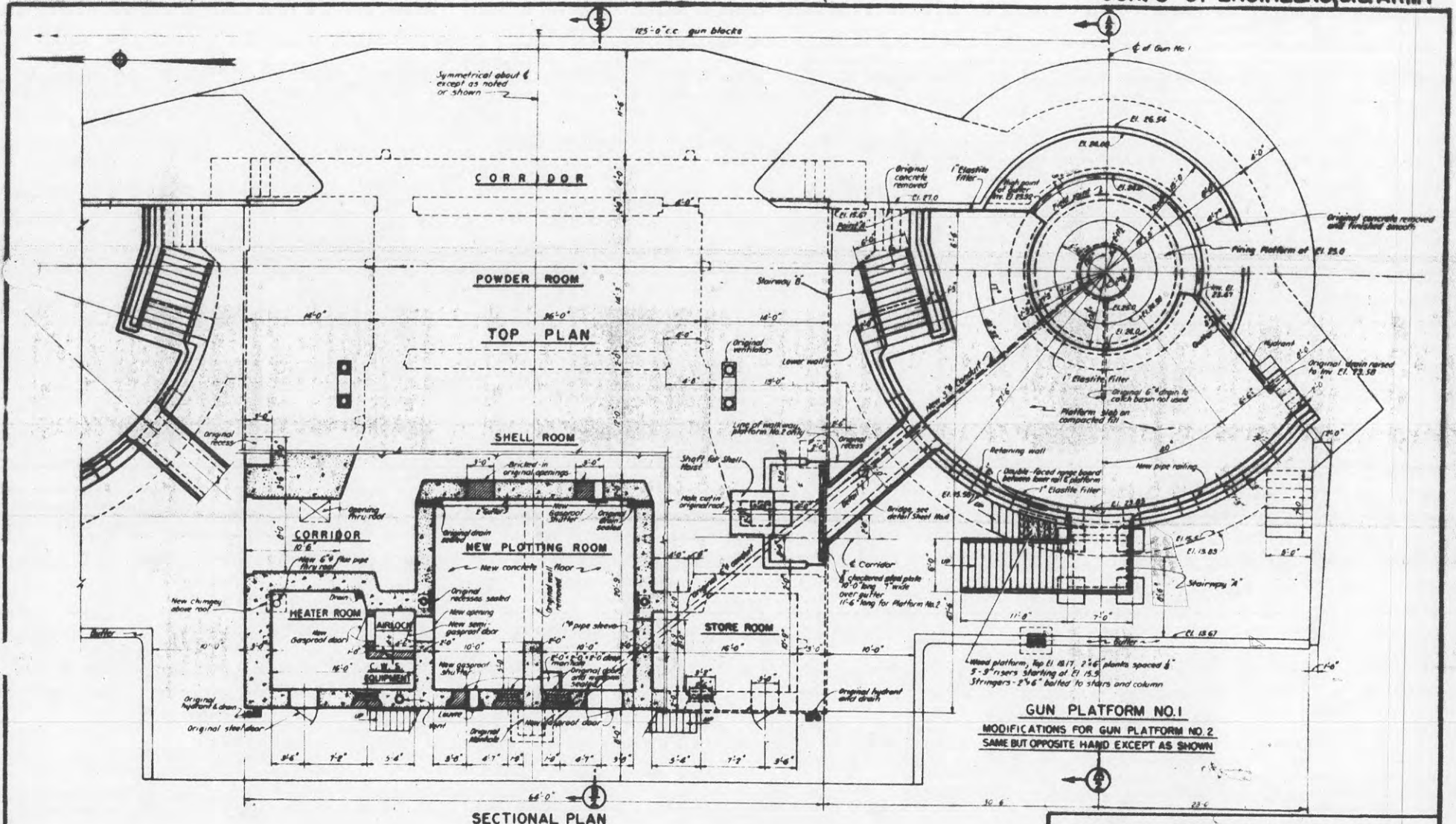
Heated by #8A Arcola, Hot water boiler.

Note:

Now designated as New Battery Peck.

.....\$ 28,747.64

SECRET



SECTIONAL PLAN

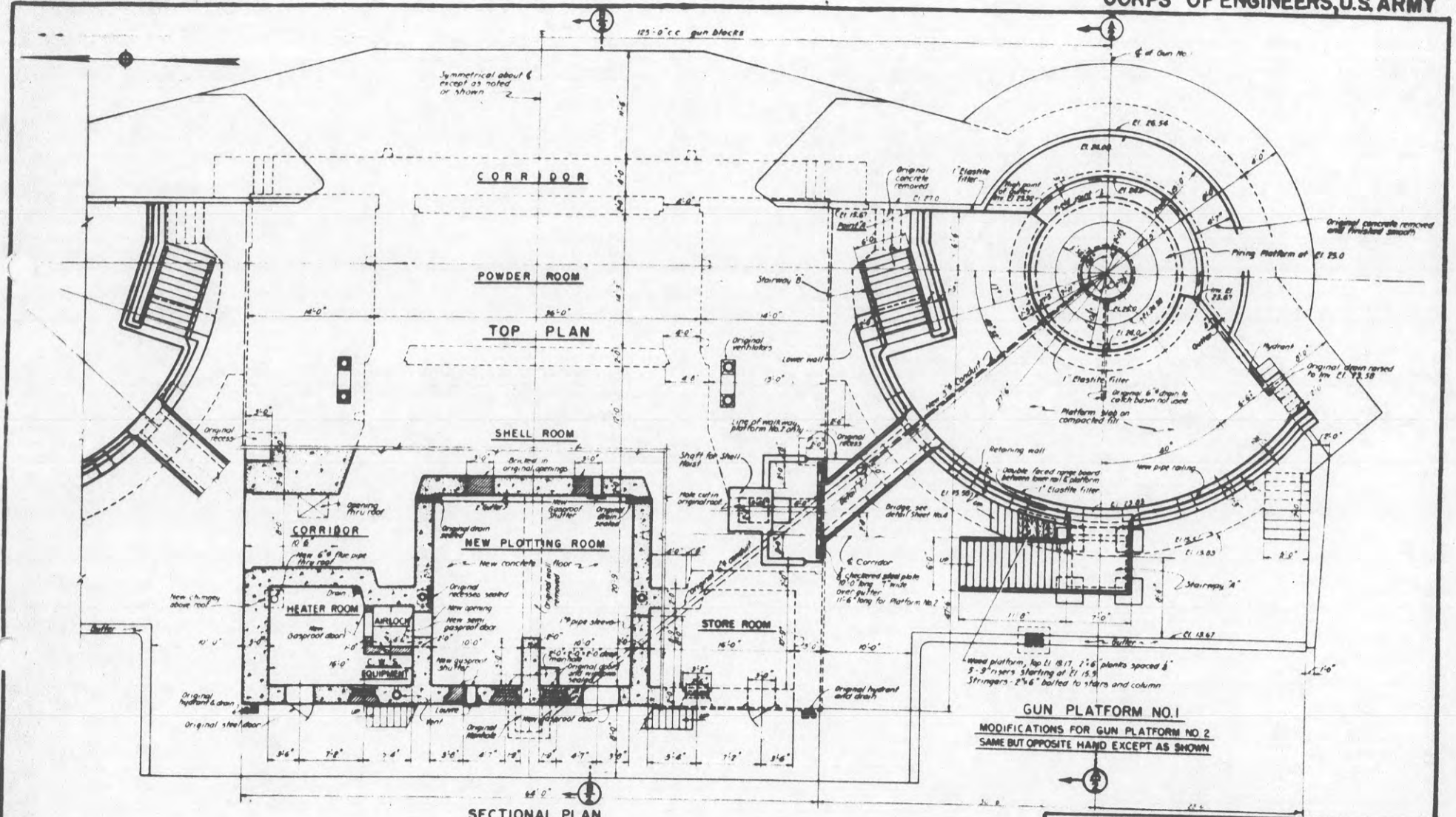
GUN PLATFORM NO. 1
 MODIFICATIONS FOR GUN PLATFORM NO. 2
 SAME BUT OPPOSITE HAND EXCEPT AS SHOWN

SECRET

NOTE
 Elevations refer to Mean Low Water Datum

HARBOR DEFENSES OF NEW YORK
 NEW BATTERY PECK
 ALTERATIONS & ADDITIONS
 (OLD BATTERY GUNNISON)
 FORT HANCOCK NEW JERSEY

0 6' 12' 16'

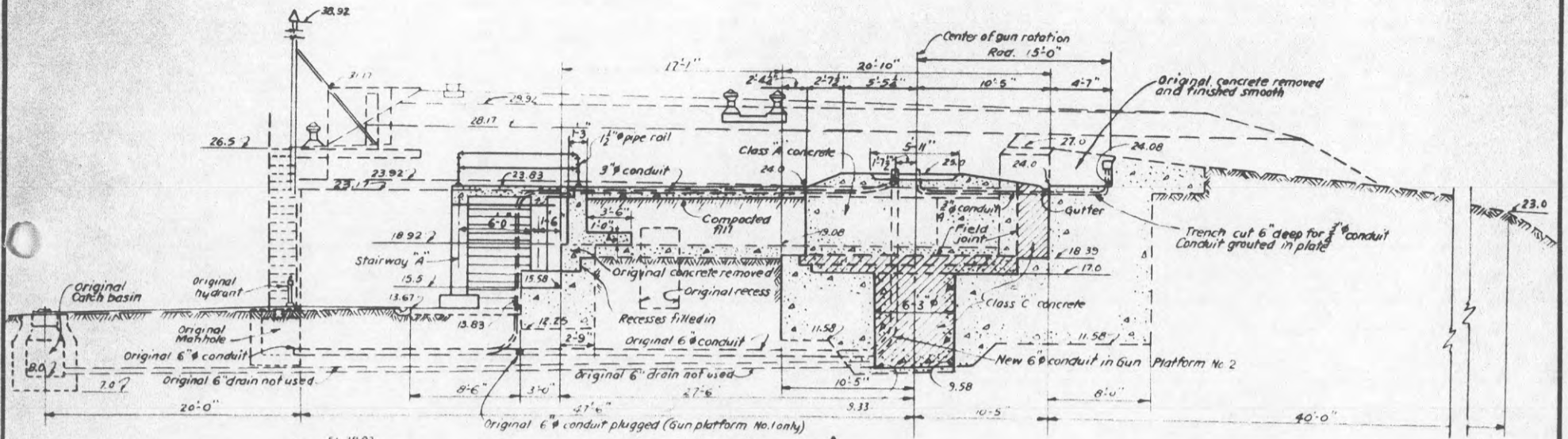


SECRET

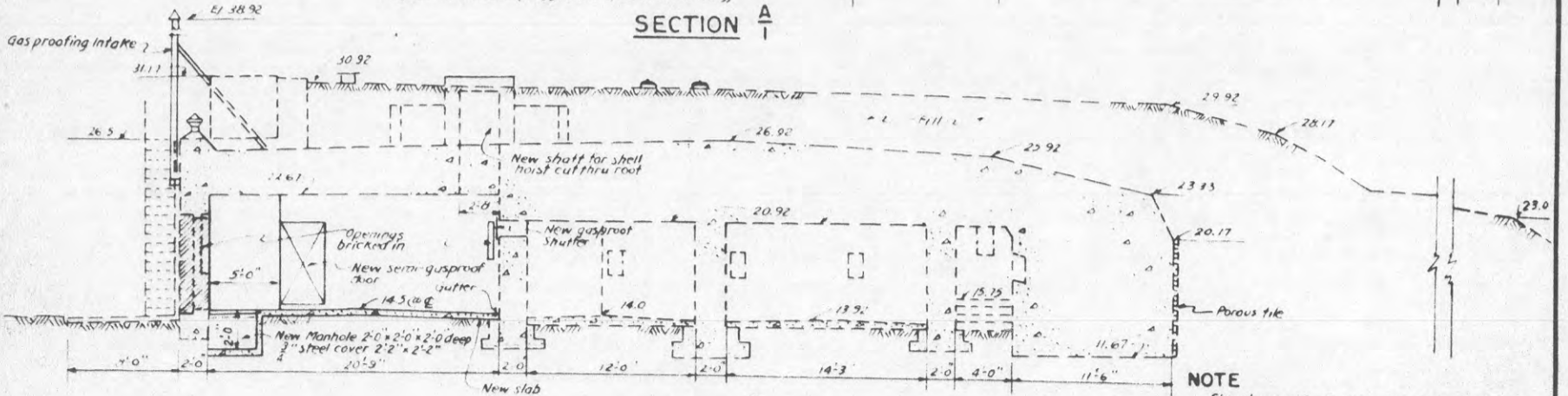
NOTE
Elevations refer to Mean Low Water Datum

**HARBOR DEFENSES OF NEW YORK
NEW BATTERY PECK
ALTERATIONS & ADDITIONS
(OLD BATTERY GUNNISON)
FORT HANCOCK NEW JERSEY**

0 6 12 16'



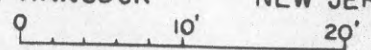
SECTION A



SECTION B

NOTE
Elevations refer to Mean Low Water Datum

HARBOR DEFENSES OF NEW YORK
NEW BATTERY PECK
ALTERATIONS & ADDITIONS
(OLD BATTERY GUNNISON)
FORT HANCOCK NEW JERSEY



SECRET

COAST DEFENSES OF Sandy Hook

FORT Hancock BATTERY Gunnison NO OF GUNS: 2 CALIBER: 6"

	EMPLACEMENT NUMBER 1		EMPLACEMENT NUMBER 2		EMPLACEMENT NUMBER 3		EMPLACEMENT NUMBER 4		
	FROM	To	FROM	To	FROM	To	FROM	To	
1-a. Azimuth	289°-		180°- 0'						
b. Distance	1685'		125'						
2-a. Model of Gun	1903 #5		1903 #34						
b. Carriage	1903 #52		1903 #57						
c. Type of	Dis.		Dis.						
3- Elevations of	-		-						
a. Gun trunnions (in battery)	28.16		28.16						
b. Interior crest	26.99		26.99						
c. Loading platform	19.08		19.08						
4- Angle of depression	0°		0°						
5- Limiting azimuths of field of fire as determined by:	FROM	To	FROM	To	FROM	To	FROM	To	
	0	0	0	0	0	0	0	0	
	a. construction of emplacement.	208.82	20.56	159.16	330.58				
	b. interference by adjacent emplacements.	208.82	331.38	159.16	330.58				
	c. interference of other obstacles external to emplacement.	332.71	336.10	159.16	330.58				
d. Position of Ordnance stops.	16.90	20.56	159.16	330.58					
	214.15	16.90	163.49	326.25					

NOTES.

1. Azimuth and distance of emplacement No. 2 are given with reference to No. 1, of No. 3, with reference to No. 2, etc. Azimuth and distance of No. 1, are given with reference to Bolt on traverse between Mortar Batteries.
3. Above plane of M.L.W.
- 5-c. Nature of obstacles Gun No. 1-Dead angle-Searchlight shed-331.38 to 332.71 AZ.
land - 336.10 to 16.90 AZ. caused by woods and conformation of
- 2-c. Use one of following abbreviations or designations: Dis., Nondis., Alt. gun-lift, Turret, Casemate, Ped., B.P.