

* Salvage of armament approved by AC of S 1122/43 - 400.93 (New York) ^{CM} 29085

REPORT OF COMPLETED WORKS - SEACOAST FORTIFICATIONS.
(Gun and Mortar Batteries)

COAST DEFENSES OF Sandy Hook
FORT Hancock, N.J.
BATTERY Granger

Form 1. Corrected to July 1, 1921 *No. of guns 2 Caliber 10" Carriage Dis

Battery commenced	: 1896	: Sources of electric current	: C.F.P. Bloomfield #1; 25 KW. set &
Battery completed	: 1898		: Alexander 25 K.W. sets
Date of transfer	: Mar. 22, 1898	: Max. kw. required for lights	: 4-1/20 K.W.
Material of construction	: Cyclopean conc.	: Max. kw. required for motors	: 14-3/4 K.W.
Portland or Rosendale cement	: Rosendale		
Cost to date of transfer	: \$87,300.00		
Connected to water supply	: Yes	: Present condition battery	: Good
Connected to sewer	: -	: Rooms wet or dry	: Fairly dry
Type of latrine	: -		
Type of data transmission	: Telephone	: How ventilated	: Through doorways, passages and
	: (Emp. #1; 33.373		: air spaces
	: " #2; 33.431	: Remarks: -	
Trunnion elevation in battery	: M.L.W.		: Battery "modernized", platforms
Datum plane			: widened

ARMAMENT

Emplacement: or Motor No.	Guns or Motors						Carriages				
	Cal.	Length	Model	Serial No.	Mfr.	Moun.:	Type	Model	Ser. No.	Manufacturer:	Motor
1	10"		1886M	#61	Water	Yes	Dis	1896	#19	Bethlehem	Yes
2					Arts.	do.	do.	do.	#20	do.	Yes
3											
4	10"		1886M	#36							
5											
6											
7											
8											

To be replaced with guns #5 and #10, M-1895, now in storage at Ft. Hancock, after above guns outlive their usefulness.

see 1st Ind., 640.2-1B.

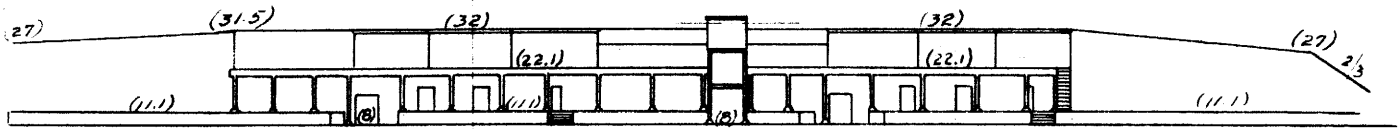
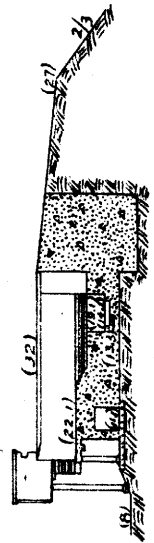
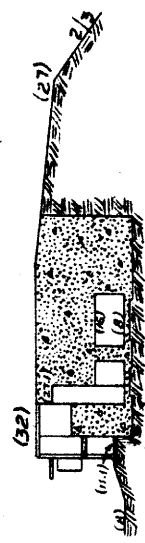
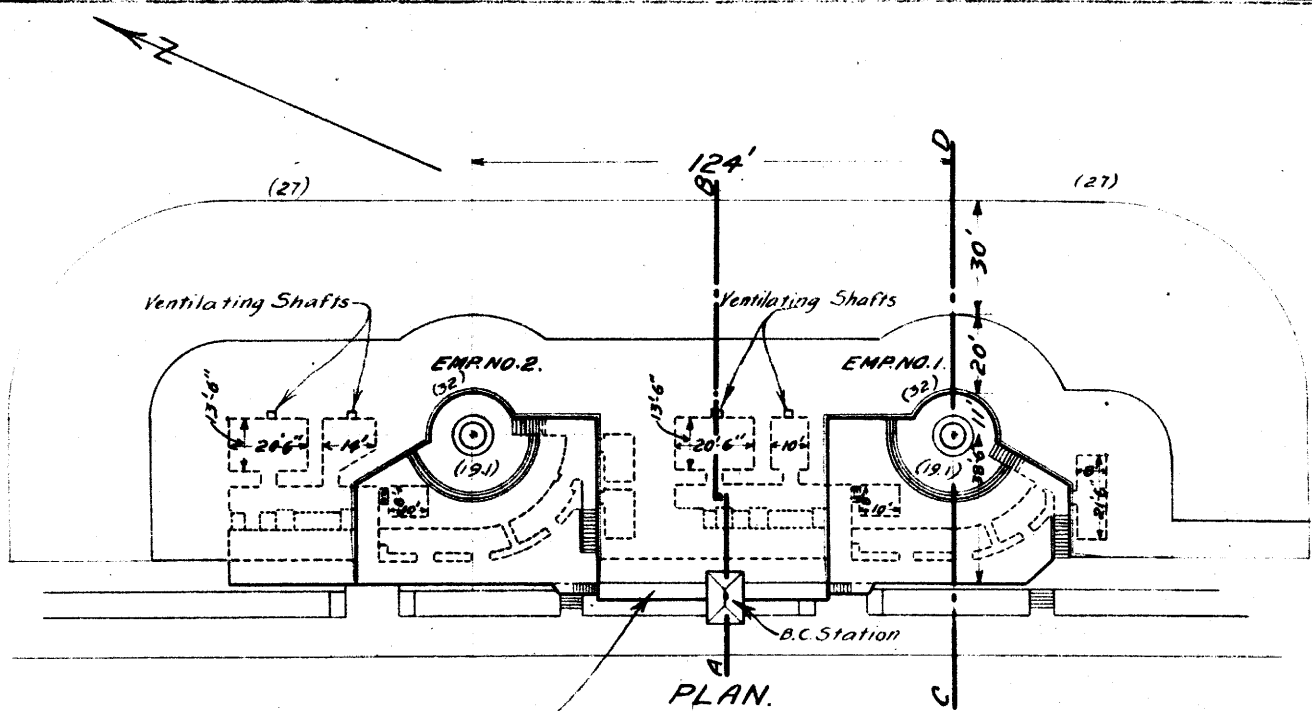
HOISTS

Emplacement: Number	Type	Deli- very	Motor	Date of Transfer	Remodeled for long points.
			Ser. No. Makes: H.P.: Volts : RPM : Type of control		
1	Back		88876 : G.E. : 5 : 110 : 1060 : R.67	July 6, 1905	Yes
2	"		91117 : " : 5 : 110 : 1060 : R.67	do.	yes
1	A		179123 : " : 3 : 110 : 1060 : R.96 A	Aug. 17, 1911	-
2	A		178767 : " : 3 : 110 : 1060 : R.96 A	do.	-

See copy of 7th Ind., 471.00 (Sandy Hook) 13 relative to disposition, which is attached.

Powder

Corrected to July 1, 1921.



COAST DEFENSES OF Sandy Hook

FORT Hancock

BATTERY Granger

NO. OF GUNS: 2 CALIBER: 10"

	EMPLACEMENT NUMBER 1.		EMPLACEMENT NUMBER 2.		EMPLACEMENT NUMBER 3.		EMPLACEMENT NUMBER 4.		
	FROM.	TO.	FROM.	TO.	FROM.	TO.	FROM.	TO.	
1-a. Azimuth	336° - 0'		156° - 0'						
b. Distance	1032'		124'						
2-a. Model of Gun	1888MI #61		1888MI #36						
b. " " Carriage	1896 #19		1896 #20						
c. Type of " "	Dis.		Dis.						
3- Elevations of	--		--						
a. Gun ironmions (in battery)	33.48		33.48						
b. Interior crest	32.02		32.00						
c. Loading platform	22.1		22.1						
4- Angle of depression	0°		0°						
5- Limiting azimuths of field of fire as determined by:	FROM.	TO.	FROM.	TO.	FROM.	TO.	FROM.	TO.	
	0	0	0	0	0	0	0	0	
	a. Construction of emplacement.	185.26	332.03	156.44	301.36				
	b. Interference by adjacent emplacements.	185.26	332.03	156.44	301.36				
	c. Interference of other obstacles external to emplacement.	185.26	187.23	168.84	189.50				
d. Position of Ordnance stops.	188.00	298.17	190.92	301.36					
	185.26	328.03	156.44	297.36					

NOTES.

1. Azimuth and distance of emplacement No. 2 are given with reference to No. 1; of No. 3, with reference to No. 2, etc. Azimuth and distance of No. 1, are given with reference to Bolt on Gun Lift Battery.

3. Above plane of M.L.W.

Gun No. 1-Dead angle-Trees-298.17 to 332.03 AZ. (Trees can
out away)

5-c Nature of obstacles " " " " " Ord. Range Tower-187.23 to 188.00 AZ.

Gun No. 2-Dead angle -Gun Lift (Batty Potter) & Batty Richardson = 156.44 to 168.84 AZ.
" " " " " Ord. Range Tower = 189.50 to 190.92 AZ.

2-c Use one of following abbreviations or designations: Dis., Nondis., Alf. gun-lift, Turner, Casemate, Ped., B.P.

REPORT OF COMPLETED WORKS - SEACOAST FORTIFICATIONS.
(Fire control and torpedo structures)

COAST DEFENSES OF Sandy Hook

FORT Hancock, N.J.

STRUCTURE B.C.Granger

Form 2

Corrected to July 1, 1921

Location	: On center traverse of Battery Granger.	Type of data transmission	: -
Date of transfer	: Sept. 20, 1907.	Date of transfer	: -
Cost to date	: \$3000.00	Cost of data transmission	: -
Type of construction	: Concrete	equipment.	: -
(a) Roof	: Concrete	For tide stations give	: -
(b) Remainder of building	: Battery Granger	description of tide	: -
How concealed	: do.	gauge.	: -
How protected	: About 3 ft.	For datum points give Forts	: -
Height above concealment	: do.	from which visible	: -
Height above protection	: Yes	For demitorics give sta-	: -
Conspicuous at 5000 \pm yards	: Emp. Sw. Box; C. P. P. Bloomfield and Alexander	tions served	: -
Source of electric current	: 20 K.W.	For cable hut give S. C. type:	: -
Kilowatts required	: Wall lamps		
Type of lighting fixtures	: No heat		
How heated	: No		
Connected to water mains	: None		
Connected to sewer	: Permanent		
Type of latrine	: Good		
Permanent or temporary installation			
Present condition	: 8.0 ft. above m.l.		
Reference of site	: 33.25 ft. above		
Reference of instrumental axis			
Type of observing instrument			
Type of plotting board			
Type and capacity of crane			
Max. dimensions of reel handled			

