

REPORT OF COMPLETED WORKS - SEACOAST FORTIFICATIONS.
(Gun and Mortar Batteries)

COAST DEFENSES OF Sandy Hook

FORT Hancock

* BATTERY Bloomfield

Form 1 Corrected to July 1, 1921

No. of guns 2 Caliber 12" Carriage Dis

Battery commenced	1898	Sources of electric current	C.P.P. Bloomfield #1; 25 K.W. and
Battery Completed	1899		Alexander 25 K.W. sets
Date of transfer	Dec. 20, 1899	Max. kw. required for lights	6-1/2 K.W. (K.W. based on 50 watt lamps)
Material of construction	Concrete	Max. kw. required for motors	29 K.W.
Portland or Rosendale cement	Portland		
Cost to date of transfer	\$94,227.89	Present condition battery	Good
Connected to water supply	Yes	Rooms wet or dry	Dry
Connected to sewer	-		
Type of latrine	-	How ventilated	Through doorways, passages and air spaces.
Type of data transmission	Telephone	Remarks:-	Battery "modernized" - platforms widened.
Trunnion elevation in battery	(Emp. #1; 35.565		
Datum plane	" #2; 35.575		
	M.L.W.		

ARMAMENT

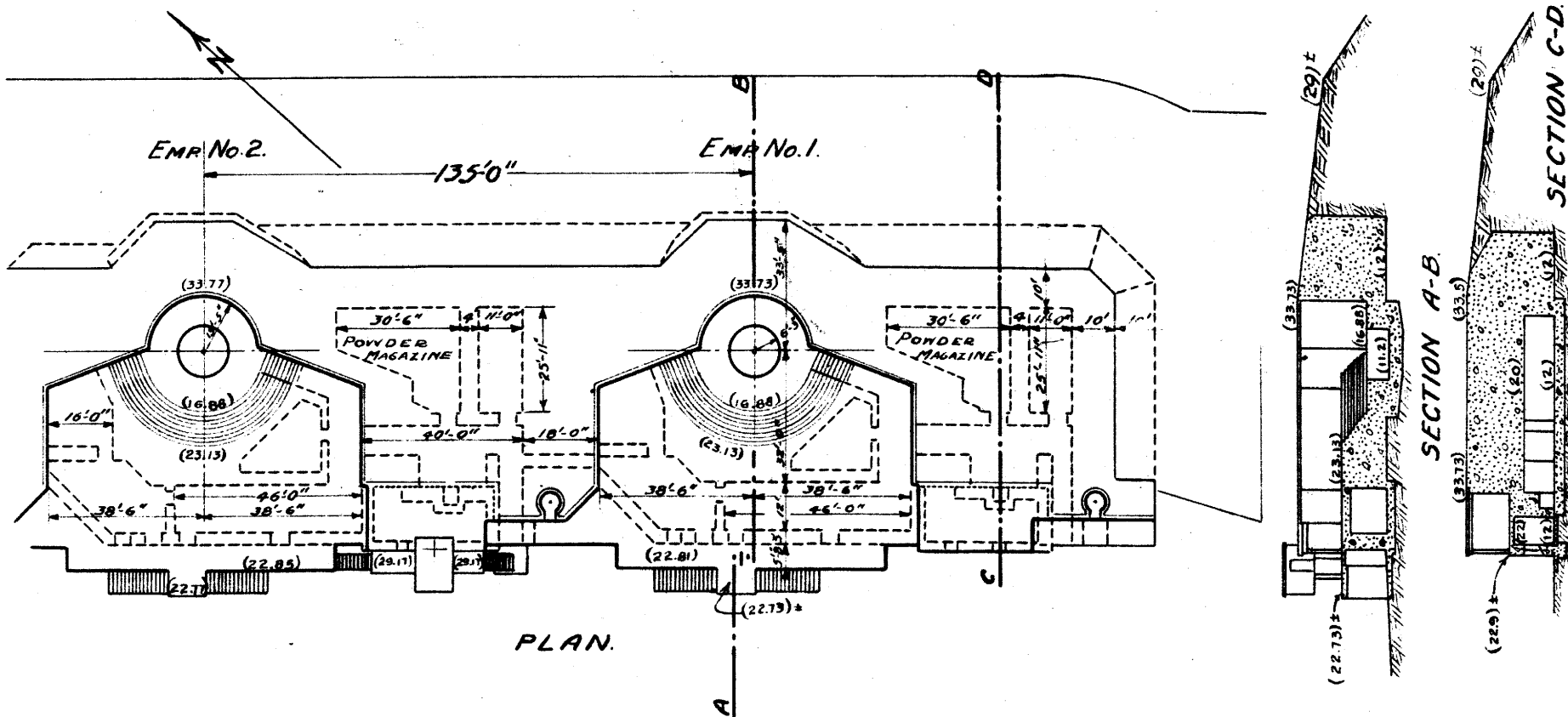
Emplacement or mortar No.	Guns or Mortars						Carriages				
	Cal.	Length	Model	Serial No.	Manufacturer	Mounted	Type	Model	Serial No.	Manufacturer	Motor
1	12"		1888M1/2	#43	Watervliet Ars.	yes 1899	Dis	1896	# 22	Morgan Eng. Co.	Yes
2	12"		1888 do.	#42	do.	do.	Dis	1896	# 19	do.	Yes
3											
4											
5											
6											
7											
8											

HOISTS

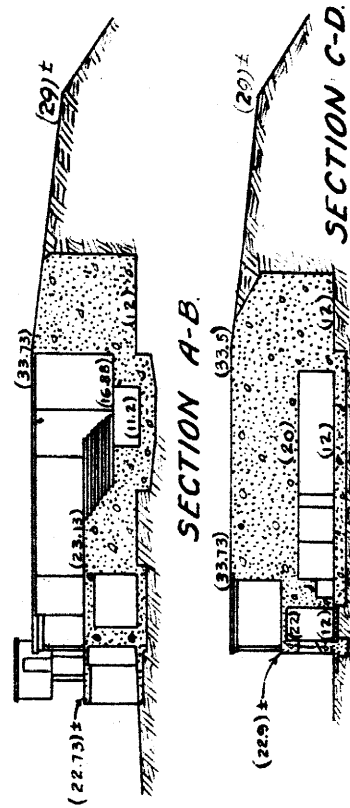
Emplacement Number	Type	Delivery	Motor						Date of transfer	Remodeled for long points
			Serial No.	Maker	H.P.	Volts	RPM	Type of control		
1	T.R.	Back	652236	G.E.	7 1/2	110	800	Contractor controller	S ept. 20, 1917	Yes
2	do.	do.	642530	G.E.	7 1/2	110	800	do. do.	do.	Yes
3										

* Salvage of armament & accessory equipment directed by ASF 11/27/43 - 400.23 (New York) CM 79659

Corrected to July 1, 1921

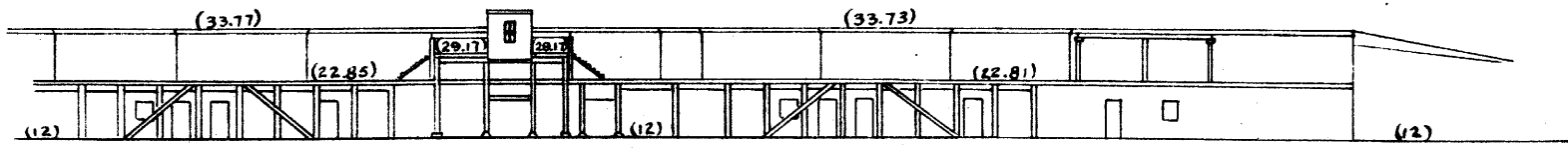


PLAN.



SECTION A-B.

SECTION C-D.



REAR ELEVATION.

REPORT OF COMPLETED WORKS - SEACOAST FORTIFICATIONS

COAST DEFENSES OF SANDY HOOK.
FORT HANCOCK.

Corrected to July 1, 1921

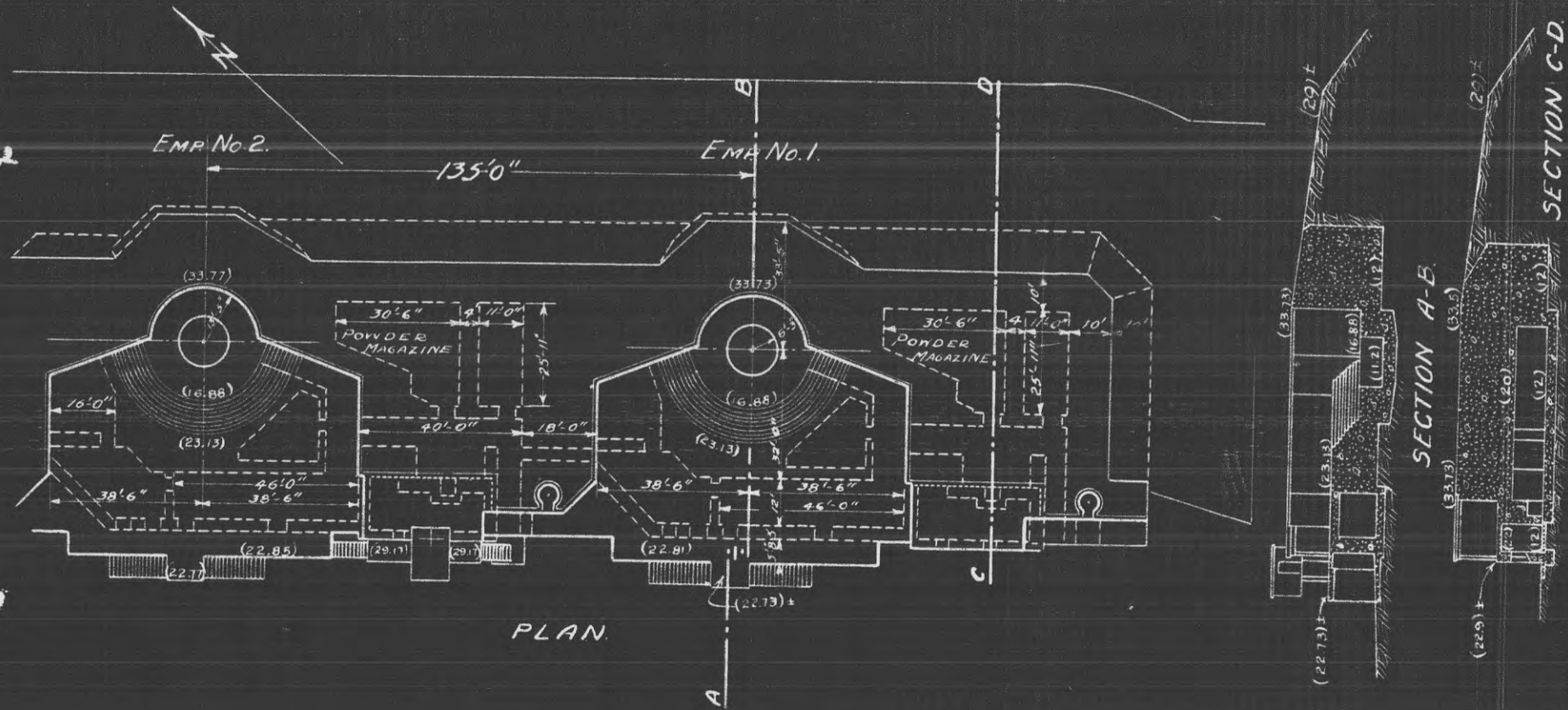
BATTERY JOSEPH BLOOMFIELD.

No. of Guns 2.

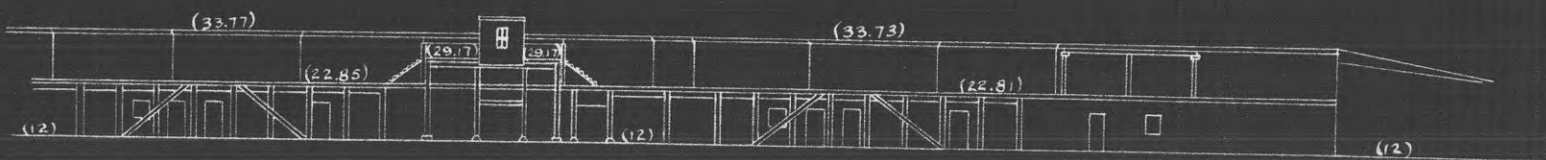
Caliber 12"

Carriage D.

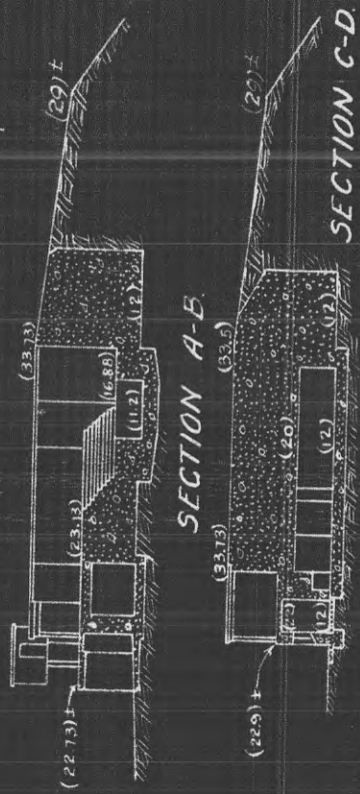
Scale 1"=40'



PLAN.



REAR ELEVATION.



REPORT OF COMPLETED WORKS - SEACOAST FORTIFICATIONS.
(Fire control and torpedo structures)

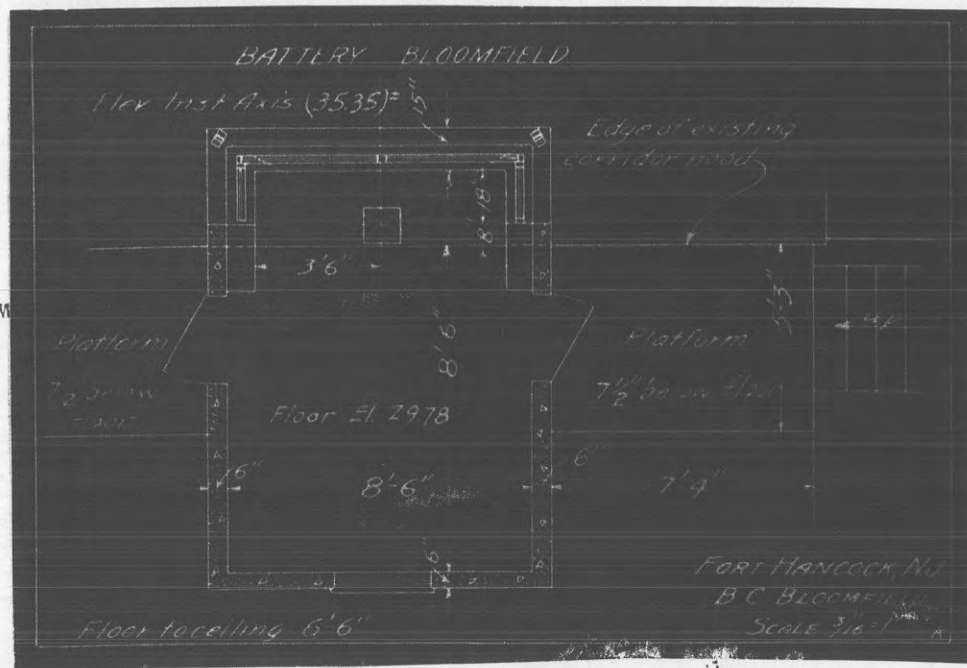
COAST DEFENSES OF Sandy Hook

FORT Hancock, N.J.

Form 2 Corrected to July 1, 1921.

STRUCTURE B.C. Bloomfield

Location	: In rear of center traverse	Type of data transmission	: -
	: of Battery Bloomfield.		:
	:		:
Date of transfer	: June 27, 1921.	Date of transfer	: -
Cost to date	: \$3,537.55	Cost of data transmission	: -
Type of construction	:	equipment.	:
(a) Roof	: Concrete	For tide stations give	: -
(b) Remainder of building	: concrete	description of tide	:
How concealed	: Partially by Battery	gauge.	:
	: Bloomfield.	For datum points give Forts:	-
How protected	: do.	from which visible	:
	:	For dormitories give sta-	-
Height above concealment	: About 3 ft.	tions served	:
	:	For cable hut give S. C. type:	-
Height above protection	: " " "		:
Conspicuous at 5000 $\frac{1}{2}$ yards	: Central power plant, Bloomfield		:
Source of electric current	: and Alexander 25 KW. sets.		:
Kilowatts required	: .20 KW.		:
Type of lighting fixtures	: Wall light		:
How heated	: None		:
Connected to water mains	: No		:
Connected to sewer	: No		:
Type of latrine	: None		:
Permanent or temporary installation	: Permanent		:
Present condition	: Good		:
Reference of site	: 12.0 ft. above m.l.w.		:
Reference of instrumental axis	: 35.0 $\frac{1}{2}$ ft. above m.l.w.		:
Type of observing instrument	: None installed		:
Type of plotting board	: "		:
Type and capacity of crane	: -		:
Max. dimensions of reel handled	: -		:



COAST DEFENSES OF Sandy Hook

FORT Hancock BATTERY Bloomfield NO OF GUNS: 2 CALIBER: 12"

	EMPLACEMENT NUMBER 1.		EMPLACEMENT NUMBER 2.		EMPLACEMENT NUMBER 3.		EMPLACEMENT NUMBER 4.		
	FROM	TO	FROM	TO	FROM	TO	FROM	TO	
1-a. Azimuth	137° - 30'		137° - 30'						
b. Distance	145' - 0"		135' - 0"						
2-a. Model of Gun	1888 M1 $\frac{1}{2}$ #43		1888 M1 $\frac{1}{2}$ #42						
b. Carriage	1896 #22		1896 #19						
c. Type of	Dis.		Dis.						
3- Elevations of	-		-						
a. Gun trunnions (in battery)	35.71		35.71						
b. Interior crest	33.73		33.77						
c. Loading platform	23.13		23.13						
4- Angle of depression	0°		0°						
5- Limiting azimuths of field of fire as determined by:	FROM	TO	FROM	TO	FROM	TO	FROM	TO	
	0	0	0	0	0	0	0	0	
	a. Construction of emplacement	151.72	296.21	152.99	296.87				
	b. Interference by adjacent emplacements	151.72	296.21	152.99	296.87				
	c. Interference of other obstacles external to emplacement	151.72	296.21	152.99	296.87				
d. Position of Ordnance stops	151.72	296.21	168.59	296.87					

NOTES

- Azimuth and distance of emplacement No. 2 are given with reference to No. 1; of No. 3, with reference to No. 2, etc. Azimuth and distance of No. 1, are given with reference to #2 Richardson gun center
- Above plane of M. L. W.
- Nature of obstacles None
- Use one of following abbreviations or designations: Dis., Nondis., All gun-tuff, Turret, Casemate, Ped., B.P.
- No. 1 Gun strikes emplacement before reaching stops, both right and left.

REPORT OF COMPLETED WORKS - SEACOAST FORTIFICATIONS
(Electric plants)

COAST DEFENSES OF SANDY HOOK

FORT HANCOCK, N.J.

POWER FOR Reserve (Batteries Bloomfield, Richardson, Halleck, Alexander.)

Form 5.

Corrected to Sept. 28, 1921.

(Bloomfield No.1)

	Serial No.	Type	Size	Mfr.	Date of transfer	Cost	Con- dition	RPM	Belt or Direct Drive	Radiator for Engine No.	Fuel	Switchboard Mate- rial	No. of Panels
Boiler No. 1													
No. 2													
No. 3													
Engine No. 1	14493	G.M.12	43/54 H.P.	G.E.			Good	560	Direct		Gasoline.		
No. 2													
No. 3													
Generator No. 1	679225	M.P.C.	25 K.W.	G.E.			Good	560	Direct				
No. 2													
No. 3													
Radiator No. 1	14890	F.F.54		G.E.			Good			14493			
No. 2													
No. 3													
Motor-Generator No. 1	931373												
No. 2													
No. 3													
Switchboard	149	Dis.	82" x 20"				Good						Marble 1-Dis
Storage Battery													
Transformer													
No. 1													
No. 2													
No. 3													
Auxiliaries													
Fan Motor No. 1	931373	C.V.C.	2-3/4 KW	G.E.			Good	1150					
No. 2													
No. 3													

\$4,700.

DISTRIBUTION OF KW. Note:- This is a reserve set. See distribution listed under Power Plant in Bloomfield No.2.

* Salvage of armament and accessory equipment of Battery Bloomfield directed by
ASF 11/27/43 - 400.93 (New York) CM 79659

REPORT OF COMPLETED WORKS - SEACOAST FORTIFICATIONS
(Electric Plants)

Form 5.

Corrected to Sept. 28, 1921

COAST DEFENSES OF SANDY HOOK
 FORT HANCOCK, N.J.
 RESERVE POWER FOR Batteries Bloomfield, Richardson, Halleck,
Alexander.
 (Bloomfield No. 2 Power Plant.)

	Serial No.	Type	Size	Mfgr.	Date of transfer	Cost	Con- dition	HPM	Belt or Direct Drive	Radiator for Engine No.	Fuel	Switchboard Mate- rial	No. of Panels
Boiler	No. 1												
	No. 2												
	No. 3												
Engine	No. 1	G.M. 12	43/54 H.P.	G.E. Co.	Apr. 1, 1921		New	560	Direct				
	No. 2	G.M. 12	43/54 H.P.	"	Apr. 1, 1921		"	560	"				
	No. 3												
Generator	No. 1	M.P.C.	Amps. 217	"	"	\$4,700.	"	560	"				
	No. 2	"	Volts 115	"	"		"	560	"				
	No. 3					Per Set							
Radiator	No. 1	FF 54									1		
	No. 2	"									2		
	No. 3												
Motor-Generator	No. 1												
	No. 2												
	No. 3												
Switchboard	Feeder										Composi-	} 3
Storage Battery	(Gen.									tion		
Transformer)	Gen.											
	No. 1												
	No. 2												
	No. 3												
Auxiliaries													
	No. 1												
	No. 2												
	No. 3												

Note: The Central Power Plant, Bloomfield Power Plants (Emplacement No. 1) and Bloomfield No. 2, and Alexander 25 K.W. sets are all cross connected through the Distributing panel in Bloomfield No. 2.

DISTRIBUTION OF KW.

Total for Power Plants Bloomfield Nos. 1 and 2--(Lights 24 K.W.
Power 56 K.W. (Motors) } For above Batteries.

Note: This power plant is located in Bloomfield No. 2

* Salvage of armament & accessory equipment of Btry. Bloomfield directed by ASF 11/27/43 - 400.23(N.Y.) CM 74652